

Glenelg Hopkins



CMA



In this edition:

- RCS consultation - have your say
- Tree drawing competition
- Red-tail count success despite restrictions
- Estuaries managing themselves well this season
- Button growing success
- Photo competition winners from around the catchment
- Come work with us!
- National Landcare conference and awards go online

Glenelg Hopkins CMA

www.ghcma.vic.gov.au

Telephone: (03) 5571 2526

Email: ghcma@ghcma.vic.gov.au

Postal: PO Box 502

Hamilton Victoria 3300

School science fun at Branxholme

My highlight this month was attending Branxholme-Wallacedale Community School with staff member Liz Mecham, to present a prize to student Ruby Herrmann for her amazing photo in the 'Valuing Water Photo Competition'. It was such a pleasure to talk to them about what we do at the CMA and get the kids excited about all things science. They were very interested in bugs, fish and eDNA! It was great to hear them share their excellent understanding and knowledge of science and their local environment.

There is still time for our community to go and check out the draft Regional Catchment Strategy. We are particularly interested in feedback from the local areas section which breaks down the region into like areas. What is it missing? Does it capture all the priorities? With the new website design it is pretty easy to view and make comments online.

Adam Bester, CEO Glenelg Hopkins CMA



Don't miss the chance to have your say on the RCS

The Glenelg Hopkins Regional Catchment Strategy (RCS) is the overarching plan for integrated catchment management – how land, water and biodiversity is managed by the Glenelg Hopkins community.

The RCS outlines the vision for the region, details priority directions, challenges and opportunities, and establishes a framework for investment and partnership implementation.

This includes how we, as a region, incorporate the values and priorities of local communities and Traditional Owners and help put Government policies into action and achieve statewide targets.

The strategy is housed entirely online with the capacity to print pages/sections. Public responses will also be submitted online.

A dark green poster with white and light green text. At the top, it says 'REGIONAL CATCHMENT STRATEGY: Public consultation now open'. Below that, it says 'HAVE YOUR SAY ON LAND, WATER & BIODIVERSITY MANAGEMENT IN THE CATCHMENT FOR THE NEXT 6 YEARS'. In the center, a light green speech bubble contains the text 'PUBLIC CONSULTATION CLOSES: 5PM WEDNESDAY 11TH AUGUST 2021'. At the bottom, it says 'READ THE STRATEGY AND SUBMIT FEEDBACK ONLINE: glenelghopkins.rcs.vic.gov.au'. The Glenelg Hopkins CMA logo is at the bottom left, and stylized white waves are at the bottom right.

REGIONAL CATCHMENT STRATEGY:
**Public consultation
now open**

HAVE YOUR SAY ON LAND, WATER & BIODIVERSITY
MANAGEMENT IN THE CATCHMENT FOR THE NEXT 6 YEARS

PUBLIC
CONSULTATION
CLOSES: **5PM WEDNESDAY
11TH AUGUST
2021**

READ THE STRATEGY AND SUBMIT FEEDBACK ONLINE:
glenelghopkins.rcs.vic.gov.au

Glenelg Hopkins
CMA

View and comment on the Regional Catchment Strategy

glenelghopkins.rcs.vic.gov.au

Public consultation closes: 5pm Wednesday 11 August 2021

Entries extended for International Tree Day competition



Glenelg Hopkins CMA is supporting the 2021 International Tree Drawing Competition being run by the creative arts community in Dunkeld. Category prizes for tree drawings are \$300!

Due to the Victorian lockdown - the Off the Rails National Tree Day event has been delayed until Saturday September 4, which means entries for the drawing competition have been extended until September 3.

Entry is simple: Draw a tree. Write your name and category on the back (adult/ secondary student/ primary student) and post it in. Entry cost is \$10/picture.

Competition entry information is available at:
www.facebook.com/Offtherailsdunkeld/

Cocky count success despite restrictions

The annual South-eastern Red-tailed Black Cockatoo count results are in, showing a small increase on last year.

Thanks to 181 volunteers across south-western Victoria and south-eastern South Australia, researchers have a whole stack of new data on the endangered species. During the annual counting day in May, 1230 birds were sighted, slightly up on the 2019 count.

These birds were sighted right across the species' range, in 57 separate locations from The Gap in South Australia to Gorae in south-west Victoria and included six large flocks ranging from 80 to 200 birds (see map right).

Seeing more birds on the day was a positive result, however, is not an indication of population increase.

The data recorded in the annual count serves as vital citizen science information for researchers such as distribution patterns and minimum population size.

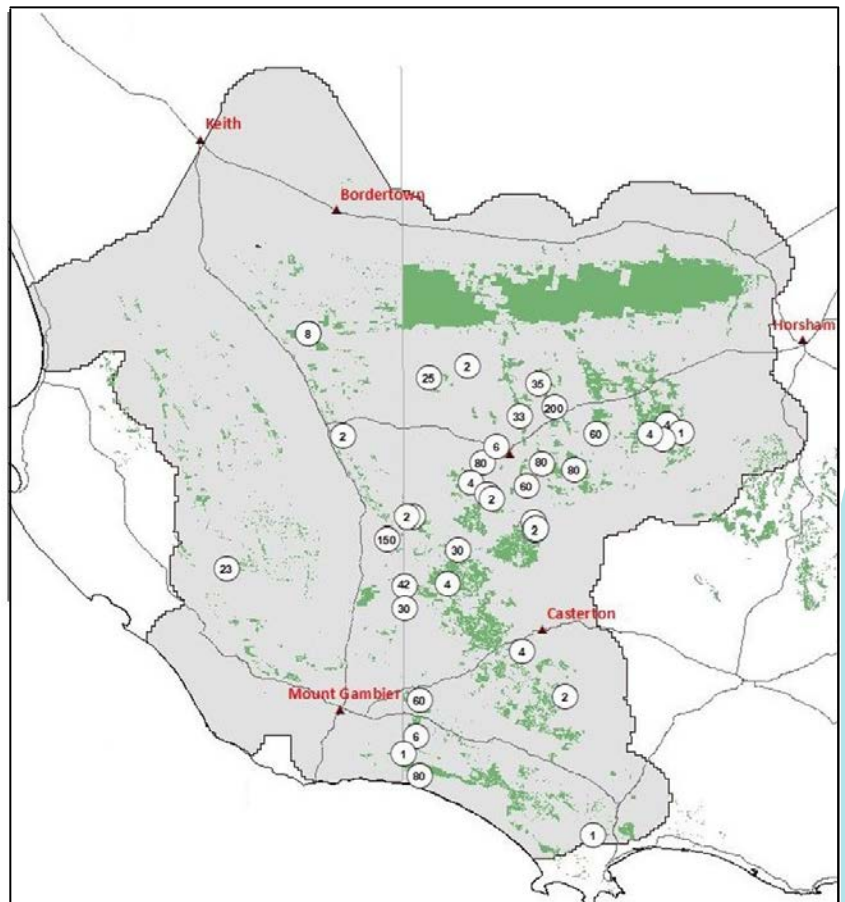
The locations of the large flocks spotted on the day will be followed-up by researchers for population demographics information – like identifying how many young juvenile birds are coming up through the population.

In addition to locating and counting birds, 28 volunteer groups also undertook additional monitoring of the red-tails' Stringybark feeding habitat. This will help identify productive areas in the landscape.



ABOVE: The red-tail in flight.

BELOW: A map showing where South-eastern Red-tailed Black Cockatoo flocks were sighted as part of the 2021 count by volunteers.



Seasonal storms and swells mostly managing estuaries



The Surry River estuary Mouth at Narrawong in June was operating as a naturally opening and closing tidal system

On-going large storms, swells and tidal patterns have continued to dominate the condition of the region's estuaries which has allowed some estuaries to open naturally, whilst others have required direct intervention. Early winter rainfall resulted in the first signs of seasonal streamflow into the estuaries for 2021.

Several have subsequently been in an intermittent state of opening and closure with the four systems (the Hopkins, Fitzroy, Glenelg Rivers and the Stingray Bay entrance of the Merri River) operating as tidal systems until mid-July. The Glenelg Hopkins CMA continues to monitor these systems daily, along with checking forecast weather events (on land and sea) to ensure positive management of these eco systems and the communities they flow through.

Plentiful propagation for Button Wrinkleworts

After the success of last year's propagation of Button Wrinkleworts, the Victoria Volcanic Plains team collected more seed from remnant populations last December.

David Franklin at Chatsworth has been growing the seed in his greenhouses and has had amazing success with more than 2200 Button Wrinklewort plants growing.

This coming spring, the VVP team will use these plants to create two new populations close to remnant populations, while the balance of plants will be rehomed into existing populations to diversify the genetics of the plant community to ensure the viability of it for the long term.



This project is supported by the Glenelg Hopkins CMA through funding from the Australian Government's National Landcare Program

Valuing water photo competition winners from around the catchment

This year, Glenelg Hopkins CMA partnered with Wannon Water to run a photo competition for school students in our regions to show us how they value water.

Students grabbed a phone, camera or ipad and got creative by showing us why water is important, with the competition attracting more than 180 entries!

There were two winners in each of the competition's categories with winners from across the entire catchment area of the CMA and Wannon Water.

Winners:

Foundation to Year 2: Isaac Sutherland, St Joseph's Primary, Coleraine; Annie Jackson, Dunkeld Consolidated School.

Years 3 to 6: Ruby Herrmann, Branhholme Wallacedale Community School; Olivia Emeny, Woodford Primary School.

Years 7 to 9: Sophia Leeming, Balmoral Community College; Zara Fox, Emmanuel College, Warrnambool

Years 10 to 12: Destiny Bambridge, Mercy Regional College; Eva Wellington, Emmanuel College Warrnambool.

There was also a random prize draw giving participating schools a chance to win one of two water efficient prizes to the value of \$330. These were awarded to George Street Primary School , Hamilton, and Warrnambool College.



EMPLOYMENT OPPORTUNITY:

Business Development Manager

FULL TIME | CONTRACT TO JUNE 2024 | FLEXIBLE WORK LOCATION

APPLICATIONS CLOSE: **WEDNESDAY 11TH AUGUST 2020**

LEARN MORE: inspirehq.com.au/business-development-manager/
INTERESTED?: Contact Ange Connor 0407 833 152

Glenelg Hopkins



EMPLOYMENT OPPORTUNITY:

Water Resources Coordinator

FULL TIME

INTERESTED?: APPLICATIONS CLOSE: **MONDAY 2 AUGUST 2021**

MORE INFORMATION: inspirehq.com.au/water-resources-coordinator/

Glenelg Hopkins


Fly into some career experience with us



Fixed term roles for applicants aged 17-29

- Environmental science
- Statutory planning
- GIS & Data
- WH & S
- Finance & compliance
- Human resources
- Project support

IMAGE: Luke Leddy

Youth Employment Program APPLY NOW
www.ghcma.vic.gov.au



Follow us on social media:



GlenelgHopkinsCMA



ghcma



GHCMA

National conference goes online - August 5 & 6

Costa brings the Landcare community together online during Landcare Week for the National Landcare Conference & Awards Events.

However, due to the ongoing COVID-19 pandemic, particularly the current lockdown in Sydney, this year's 2021 National Landcare Conference and 2021 National Landcare Awards events will be hosted online.

The online conference will be attended through the venue's purpose-built platform designed for all participants to get the most out of the conference and awards events. Educational resources will be available to all who register at: www.nationallandcareconference.org.au

The National Landcare Conference brings together Landcare groups and volunteers, landholders and farmers, Indigenous land and sea managers, landcare facilitators and coordinators, educators, research agencies, natural resource management professionals, and other community environmental groups and individuals to share insights, learn and connect.

Hosted by Landcare champion and ABC TV host, Costa Georgiadis, the 2021 National Landcare Conference program includes a keynote talk by John Anderson, guest speaker David Lindenmayer and plenary and panel speakers. They will be joined by a hugely diverse range of speakers from the landcare community, government representatives and academics in 40 sessions across the four conference streams: Sustainable Agriculture; Environment and Climate Change; Community Partnerships in Action; and Landcare Impact.

Delegates will also have the opportunity to attend panel discussions on a variety of topics sure to be of interest to so many involved in Landcare:

Landcare Farming: Landcare and farming, is the connection still valued?

Bushfire Recovery and Resilience: Landcare's role in recovery of communities, natural assets and farms after bushfire events

Wellbeing and Mental Health Panel: Landcare Is ALL about trees right?

Cultural Land Management Panel: Integrating Indigenous Perspectives for better land management



2021 National Landcare Conference

The National Landcare Conference is the largest knowledge sharing convention for the Landcare community.

National Landcare Conference / nlcaa

