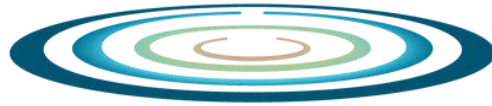




Glenelg Hopkins



CMA



In this edition:

- All abilities access to Merri River now open!
- Fish surveys find mammoth residents in new habitat areas.
- Webbed friends found in fish surveys.
- On-farm revegetation day at Blackwood.
- Getting out in the catchment to learn about enviro flows.
- Work Experience.
- Blossoming Autumn.
- anglers fish more than 130kg of carp from waterways.
- removing pine wildings to let native trees thrive.
- Trees for fish.
- Pasture assessment & grazing management.
- supporting women on farms.

Glenelg Hopkins



CMA

www.ghcma.vic.gov.au

Telephone: (03) 5571 2526

Email: ghcma@ghcma.vic.gov.au

Projects and discussions open up opportunities around the catchment

The CMA staff and Board were fortunate to have had their May Board meeting in Coleraine recently. This was a great opportunity to meet with Southern Grampians Shire Council staff and Councillors as well as Coleraine residents.

The focus of discussion was on the 2016 flood events and what planning and proposed mitigation works are being looked at to reduce flood risk to Coleraine and its residents. Key opportunities include further designs for a levy bank along Bryans Creek as well as weed control works to improve the river and provide recreational opportunities for residents.

Adam Bester CEO Glenelg Hopkins CMA

All abilities access to Merri River now open!

Warrnambool's Merri River is now accessible to people of all abilities with the opening of the kayak pontoon on Woodend Road. The floating pontoon has all ability access which provides for people of limited mobility and wheelchairs to access the waterway for kayaking, canoeing, fishing and other recreational activities.

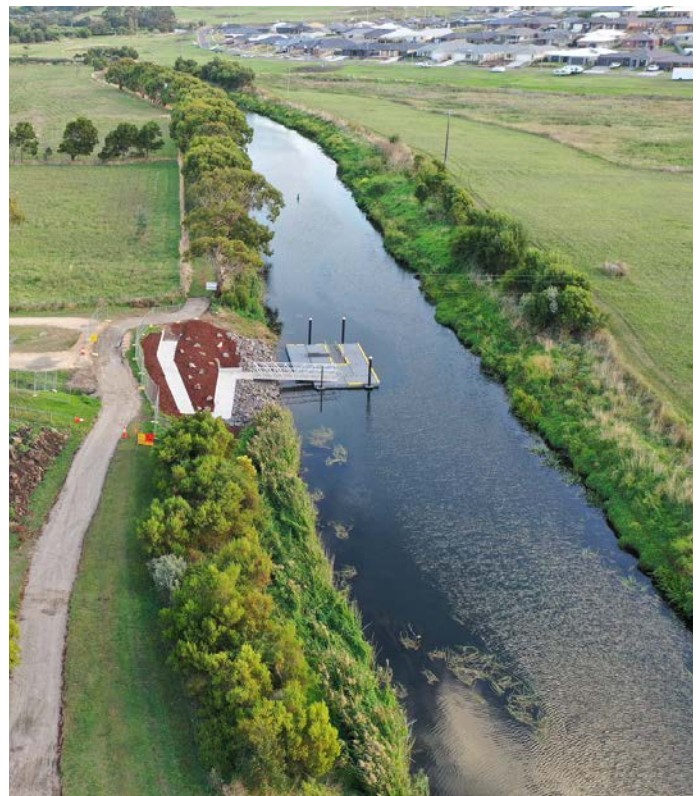
The pontoon has been installed by Warrnambool City Council through the Glenelg Hopkins CMA's Merri Connections Projects, which has been funded by the Victorian Government through the Recreational Water Values Program. The \$400,000 funding also supported enhanced pedestrian access to the Merri River through the construction of all-weather walking track paths and seating on top of the floating pontoon.

Glenelg Hopkins CMA CEO Adam Bester said being able to work in partnership with Warrnambool City Council to deliver a public facility like the pontoon was a very positive thing.

Warrnambool City Council CEO, Andrew Mason, said the new kayak launch facility was a recommendation from the South of Merri Precinct Plan, which aims to create a more connected neighbourhood where the local environment can be both enjoyed and protected.

The support for the project came not only through the Victorian Government funding, but also the Eastern Maar Aboriginal Corporation, which collaborated on the project.

Now the kayak launch facility is open, Mr Bester and Mr Mason said work on a new fishing pontoon about 150m upstream will begin, while connected concrete paths along the walking track of the Merri should be soon completed.



Read the full media release [HERE](#)

See the launch video [HERE](#)

Fish surveys find mammoth residents in new habitat areas

With the recent fish habitat projects on the the Hopkins and Merri Rivers now complete, the post-project fish surveys have been undertaken.

In exciting news, 40cm+ bream and perch were found in and around the newly installed fish habitat areas.

Fish of this size are a great indicator of waterway health and why we want to do more habitat and riverbank improvements.

These projects and this fish survey work has been funded by the Australian and Victorian Governments.



Webbed friends found in fish surveys

While conducting fish surveys of the Merri and Hopkins rivers recently to assess the newly installed habitats, a bonus little furry webbed friend was found using the new habitat !

[Watch the video of the platypus here](#)



*** holding a platypus by the tail is the approved way to make sure both the animal and the researcher is not injured ***

CMA NEWS:

On-farm revegetation day at Blackwood

On-farm revegetation can be a hard sell sometimes, but when productivity gains are the result, it's worth learning more about it.

Recently, Dunkeld Pastoral Company opened its paddocks for inspection to almost 60 people to highlight the benefits the company has found in the aspirational goal of revegetating 20% of the property with native vegetation.

Their biggest win: productivity gains for their livestock operation.

Presenters from Dunkeld Pastoral Company, Melbourne University, Otway Agroforestry Network, and Nature Glenelg Trust spoke about the productivity, biodiversity, and ecological gains which can be delivered by increasing on-farm vegetation areas.



Getting out in the catchment to learn about enviro flows

Members of the Glenelg Hopkins CMA environmental water team visited Harrow and the Glenelg River to speak with locals and see how the river is looking.

Talking to locals about why we do what we do and how water is managed is a key part of our activities.

Local residents along the Glenelg River are encouraged to talk to us if they have questions about the waterway and how it's managed.



Want to know more about environmental water? Check out some of the FAQs on our website www.ghcma.vic.gov.au or give us a call on (03) 5571 2526

Visit the environmental water page on our website [HERE](#)

Work experience

Monivae College, Hamilton, student Sebastian Rovers was on work experience with us recently and the team had him out in the field getting hands on with fish population surveys, grassland and native vegetation surveys and project assessments.



Blossoming Autumn

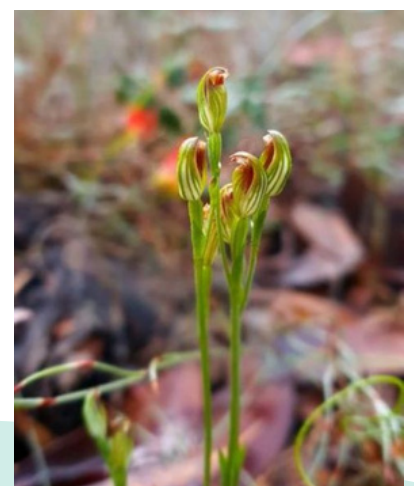
Despite the cold weather, lots of native flowers are in bloom making the Grampians / Dunkeld region amazing to wander this autumn.



Fringed Hare Orchid
(*Leoprella fimbriata*)



Variation of Pink heath
(*Epacris impressus*)



Endangered Autumn greenhood
orchid
(*Pterostylis rubescens*)

Anglers fish more than 130kg of carp from waterways

The Carp fishing comp held by Koroit & district Angling Club helped remove 130.4kg of carp from the waterways when it held a carp fishing competition in May.

Supported by the Glenelg Hopkins CMA, the event attracted 94 entrants who fished for two days out of the Hopkins River and Mt Emu Creek.

Winner of the heaviest carp was Hamilton's Chris Doorman (pictured) with a 7.55kg fish.



Watch the video of finding out how many eggs a 7.5kg carp has inside on [Facebook](#) and [Instagram](#)

Removing pine wildings to let native trees thrive

The Glenelg Hopkins CMA works crew team has been working alongside Parks Victoria recently removing pine wildings from high value landscapes around wetlands in the southwest of our catchment.

The removal of these young trees improves not only the natural biodiversity of our forested areas, but also provides opportunity for the food source trees for the endangered red-tail black cockatoo to thrive.

Activities undertaken by the CMA works crew are funded by the Victorian Government.



Hopkins River *Trees for Fish* planting day

Glenelg Hopkins



CMA



WARRNAMBOOL
**COASTCARE
LANDCARE**
NETWORK

Join Glenelg Hopkins CMA and the Warrnambool Coastcare Landcare group at the community tree planting

Saturday June 17

10am - 12.30pm

Deakin University

Warrnambool Campus

Meet at the old Golf Course car park

BYO: Wet weather gear, sturdy footwear, gloves and water

For more information contact Steve Ryan:
s.ryan@ghema.vic.gov.au or 0438625963



Pasture Assessment & Grazing Management



Tuesday 6th June 2023, 9.30am - 1.00pm

Nareen Hall, 1950 Nareen Rd, Nareen VIC 3315

This FREE workshop is hosted by Upper Glenelg Landcare Group.

About the workshop

Pastures cost a lot of money and time to establish. The last thing producers want to experience is the disappointment of a pasture thinning out after only a few years. Southern Farming Systems have developed multiple pasture products on behalf of MLA, to help you keep your pastures productive and persistent. Come along and find out from Lisa Miller, SFS the latest tools developed on grazing management.

Agenda

Presentations, paddock walk & pasture assessment, lunch.



Pasture Paramedic Tools & resources to rapidly assess pasture condition and provide you with a treatment pathway.

Registration:

Please register by 30th May

Via this link

<https://forms.office.com/r/J8Bt7AwLSC>

Or

Contact Lynn Brown

E: upperglenelglandcare@gmail.com

M: 0428 067 130



Glenelg Hopkins



CMA



This project is supported by the Glenelg Hopkins CMA, through funding from the Australian Government's National Landcare Program.

CMA NEWS:

Supporting women on farms

Hands-on learning at the next Women on Farms event.

Come for a walk and talk at South Mokanger and learn about the commercial realities of carbon sequestration and emissions, pastures, and feed planning.

More details at www.sfs.org.au



Pastures, carbon emissions and feed planning in a commercial operation

22 June 2023
South Mokanger

710 Mokanger Road, Cavendish

10am - 2pm

Join a farm walk and talk about how a commercial prime lamb and cattle enterprise assesses carbon emissions and finds sources of sequestration. Discuss feed planning and soil organic carbon management.

**REGISTER
ONLINE:
www.sfs.org.au**

