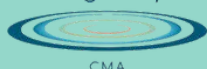


In this edition:

- New Board appointments for Glenelg Hopkins CMA
- Farewell Damein Bell
- Over \$330,000 of Victorian Landcare grants to region
- Successful 2023 Glenelg Hopkins catchment VLG project grant recipients
- Australian water creatures booklets go international
- Hands on learning with work experience for Sam
- Curling around the wetlands of the south west
- New pondcast out now
- Grasslands seed collection to support endangered species
- Water resources support officer
- International Day of Rural Women event
- Understanding your NFP committee responsibilities events
- Funding for wildlife in Portland region now available

Glenelg Hopkins



CMA

www.ghcma.vic.gov.au

Telephone: (03) 5571 2526

Email: ghcma@ghcma.vic.gov.au

Integrated staff meeting puts the CMA out on the grasslands

Glenelg Hopkins CMA staff recently had their Integrated Staff Meeting in the Maroona area south of Ararat.

It was a great opportunity to get out doors and meet with local Landcare members and landholders and check out some of the amazing projects being undertaken.

We want to thank local landholders Peter and Christine Forster for showing us their 20+ yr project on the Bullock Hills. When they purchase the property the hills were totally bare, but now the hills are covered with a self-sustaining woodland.

We also had the pleasure of visiting Shepherd's Hut Sanctuary at the Tucker's property. This project began with an brave idea, that resulted in a predator proof fence being established in 2016, which now contains populations of Woylies and Southern Brown Bandicoots.

Adam Bester CEO Glenelg Hopkins CMA

New Board appointments for Glenelg Hopkins CMA

The Victorian Government appoints non-executive directors to the boards of water corporations and catchment management authorities.

The composition of boards from 1 October 2023 was announced by the Victorian government in September.

For the Glenelg Hopkins CMA, two new board directors were appointed. These new directors - Rowan MacKenzie and Kate Redwood - will attend their first CMA board meeting in October, to be held in Ararat.

Kate Redwood is an experienced Director and previous Local Government Councillor who is very engaged with her community via environmental and sporting group membership and has significant experience in governance and risk management, with previous roles in the health sector.

Rowan Mackenzie is a consultant in the Environment and Sustainability field with previous experience working in Surf Coast Shire, Barwon Water and EPA.

Welcome aboard Kate and Rowan!

Farewell Damein Bell

As part of the Glenelg Hopkins CMA board nomination process, Board member Damien Bell did not seek reappointment. Damein has been with the CMA Board since 2015.

Over his time Damein has helped oversee:

- Two Regional Catchment Strategies
- Glenelg Hopkins Waterway Strategy
- Aboriginal Partnership Framework
- Numerous corporate plans and annual reports
- Involvement on the Remuneration and Performance Committee
- Recruitment of CEO
- The Gunditj Murring and GHCMA Partnership Statement
- And of course countless tours of the Budj Bim landscape

“We will miss Damein’s practical approach, support and direction towards a much better understanding and appreciation of cultural values, First Nations policy and the importance of recognition,” Board chair Tony Ford, said.

Returning and continuing board members:

Tony Ford (chair)

Michelle Casanova

Celia Tucker

Karrinjeet Singh-Mahil

Gerry Quinn

Christine Giles

New board members:

Rowan MacKenzie

Kate Redwood



Source :Facebook

Over \$330,000 of Victorian Landcare grants to region

The 2023 Victorian Landcare Grant recipients have been announced!

In the Glenelg Hopkins region, 22 Landcare projects have been funded, valued at almost \$323,000.

A further 27 groups have been successful in receiving \$500 support grants for administration, meaning over \$336,400 has been awarded to groups in our catchment.

The VLGs are always a popular and competitive grant program and this year was no different with Glenelg Hopkins CMA receiving applications from 44 different Landcare groups seeking funding for projects valued at over \$575,000.

More information about successful recipients can be found at www.environment.vic.gov.au/grants/victorian-landcare-grants



Successful 2023 Glenelg Hopkins catchment VLG project grant recipients

RECIPIENT	PROJECT TITLE	FUNDING AMOUNT	LOCAL GOVERNMENT AREA
Beyond Bolac Catchment Action Group	Habitat protection & enhancement for threatened species at Tiverton	\$19,950.00	Moynesshire
Bulart Land Management Group	Protecting Bulart's Biodiversity by Caring for the Kurrambee Creek.	\$19,985.80	Southern Grampians Shire
Bunnugal Landcare Group	Boosting the Biodiversity of Bunnugal's Waterways 2023-2024	\$4,320.00	Southern Grampians Shire
Culla-Pigeon Ponds Land Management Group	Biodiverse Habitat Enclosure	\$20,000.00	Southern Grampians Shire
Gazette Land Action Group	Biolink plantings, erosion control, revegetation, waterway management, this Gazette Group project has it all.	\$19,935.82	Moynesshire, Southern Grampians Shire
Gazette Land Action Group	From Mt. Napier to Mt. Rouse, the Gazette Group continues the biolink plantings.	\$19,970.50	Moynesshire, Southern Grampians Shire
Hamilton Coleraine Rail Reserve Committee of Management	Hamilton Habitat Corridor: building capacity through revegetation, protection and community engagement	\$10,373.50	Southern Grampians Shire
Hamilton Coleraine Railway Line Landcare Group	A 20 year farm project to protect and revegetate the Wannon River and its tributaries	\$8,992.50	Southern Grampians Shire
Mt Noorat Management Committee	Caring for Country at Mt Noorat - restoring connectivity and culture	\$10,821.00	Corangamite Shire
Panyabyr Landcare Group	Protecting waterways and increasing biodiversity along Bochara's creek 2023-2024	\$19,902.80	Southern Grampians Shire
Pierrepoint Land Protection Group	Pierrepoint plantings	\$6,776.00	Southern Grampians Shire
Pigeon Ponds Recreation Reserve	Reserve protection	\$3,861.00	Southern Grampians Shire
Port Fairy to Warrnambool Rail Trail Inc.	Revegetating the Rail Trail easement	\$3,230.00	Glenelg Shire
Southwest Environment Alliance Inc	Connecting Community with Conservation and Connectivity Corridors	\$16,851.40	Glenelg Shire
The Gringe Improvement Group	Creek erosion and slip remediation	\$15,322.35	Southern Grampians Shire
The Gringe Improvement Group	Native corridor creation	\$19,876.50	Southern Grampians Shire
Upper Hopkins Land Management Group	Modified Farm Dams to Promote Aquatic Habitats	\$19,477.90	Ararat Rural City
Upper Hopkins Land Management Group	Large Scale Plantings for Sustainable Futures	\$19,729.00	Ararat Rural City
Upper Hopkins Land Management Group	Revegetation of Stony Rises	\$18,488.25	Ararat Rural City
Warrnambool Coastcare Landcare Network	Building biodiversity links and corridors through the LandLife project	\$19,600.00	Moynesshire, Warrnambool City
Woorndoo Chatsworth Landcare Group	Testing protocols for repairing patches and edges within and around native grassland remnants	\$5,439.00	Moynesshire

CMA NEWS:

Australian water creatures booklets go international

Learning about Australian water creatures went international recently when Glenelg Hopkins CMA staff member, Richard Murphy, shared the Glenelg Hopkins Water Critters colouring book with children at the Upendo Foundation children's home at Moshi, Tanzania.

Richard, and wife Ushi, travelled to Tanzania as part of a fund-raising safari organised by Upendo Foundation Australia (UFA) and RAW Africa.

Along with visits to Serengeti, Ngorongoro and Tarangire National Parks, they also spent 3 days at Upendo. They took with them some of the colouring books and pencils created by the CMA to increase the awareness of what's in our waterway as part of our environmental water program.

Founded in 2009 as an art school for street kids, Upendo Foundation has evolved to provide orphan children, or those with no family support, a nurturing home, access to education and supported pathways to employment.



Hands on learning with work experience for Sam

For a week we had Yr 10 student Sam for work experience.

The CMA made use of the branches that fell down as part of wild weather that whipped through the Deakin University campus.

The branches were used for making a demonstration fish hotel which can be used to take to event to show how the much bigger, in-river ones need to be constructed.

Sam's hands-on learning also included some eDNA sampling, tree planting, seed collection, and coastal environment weed control.



Curling around the wetlands of the southwest

This is the wetland plant known as Curly Sedge (*Carex tasmanica*).

This endangered plant was found by our team wading around in wetlands in southwestern Vic as part of our Western Wetlands and River Project which is identifying wetland areas and helping landowners protect them.

Funding in the 2023-2024 financial year is available for landholders who have wetlands on their property for assistance with:

- Fencing
- Revegetation
- Pest plant + animal control
- Hydrological restoration (blocking or partially blocking existing drainage lines)

Location of funding: broadly the western part of our CMA region. Any areas west of the Grampians (Gariwerd) can be considered, but areas being targeted are those towards the Glenelg River.

Get in touch with Tim Covey at the CMA for more information about funding t.covey@ghcma.vic.gov.au.



New Podcast episode out now!

How do you control an invasive exotic weed on environmentally and culturally sensitive areas?

For Italian Buckthorn, it takes an integrated approach.

And while herbicides have their place, in the latest episode of The Pondcast, Italian Buckthorn expert Robin Adair explains how and why fire might be the best.

Listen via all the usual podcast streaming services or on our website [HERE](#)

You can also listen to all our other Pondcast episodes telling the story of what we do at the CMA and how we do it.



Episode 13: **Burning back the Buckthorn**



LISTEN NOW

The Pondcast is available on
Apple podcasts
Spotify
Google Podcasts
and ghcma.vic.gov.au



CMA NEWS:

Grasslands seed collection to support endangered species

Work has begun on a new VVP project funded under the Victorian Government's Naturefund to establish a Seed Production Area for some of the rarest and most endangered plants in the Glenelg Hopkins region.

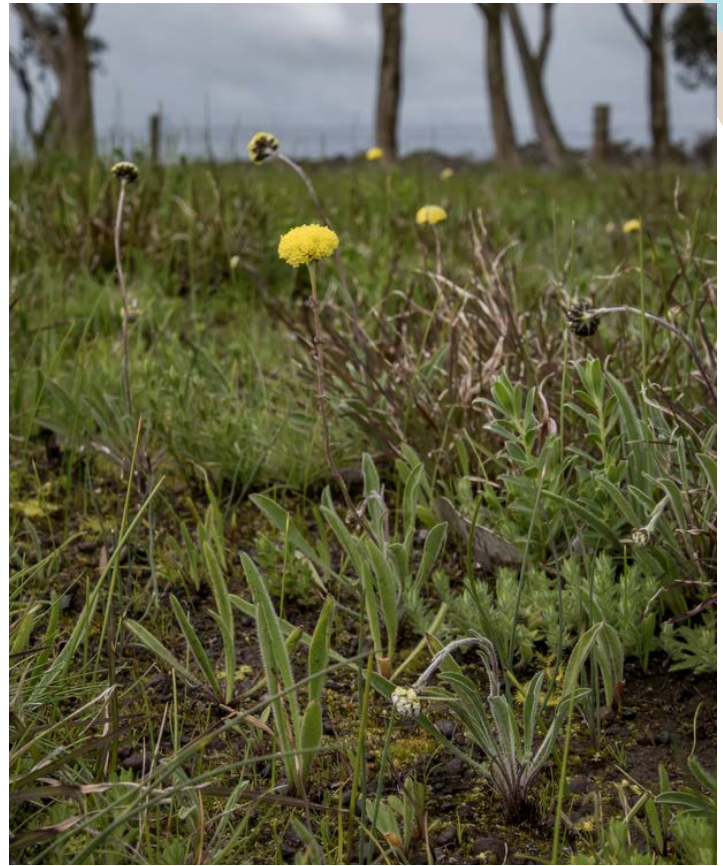
In coming months, seed collection across wild populations to establish production plants in a grassland nursery will be undertaken.

Over the next two years, seed harvested from the production area will be used to establish new populations in remnant grassland on private land and restoration sites.

Seed collection has already begun for the very rare, and only recently described, *Craspedia basaltica* (pictured).

This rare daisy is known from just a few locations, all on the VVP.

The largest populations in the Glenelg Hopkins region are located close to Woorndoo in patches of roadside grassland regularly burnt by the local volunteer CFA brigade.



Understanding your NFP committee responsibilities events

Do you understand your obligations, risks and responsibilities when you are on a Landcare committee, NRM committee or community group?

To help people understand, funding through the Victorian Government's *Our Catchment Our Communities* program has made available FREE 3-hour workshops in Warrnambool and Hamilton in October.

There's also the chance to talk specific legalities with the providers Justice Connect if you have a specific governance issue you want to work through.

Do you understand your obligations, risks and responsibilities on a Landcare, NRM committee or community group?

FREE
3 hour workshops

Governing a Not-for-profit Organisation Workshops

Warrnambool | Wednesday October 11 | 5.30pm - 8.30pm
Hamilton | Tuesday October 17 | 10am - 1pm
(or via Zoom if required)

TOPICS COVERED:

- Legal roles of committee/board members as decision makers
- Differences between governance and management
- Legal structure and status of your organisation
- Importance of rules/constitution and legal purpose or objects
- Four key legal duties of committee/board members
- Potential liabilities, protecting yourself and your organisation
- Other relevant laws
- Top tips and additional resources to help in the future

REGISTER via QR code or online at:
<https://forms.office.com/r/7uL6hpT46d>
Questions?
Email: b.northeast@ghcma.vic.gov.au

Glenelg Hopkins
justice connect
Our Catchments Our Communities
VICTORIA State Government

Catering included. RSVP essential - limited places

Register for the workshops online
HERE

CMA NEWS:

International Day of Rural Women event

Connecting rural women

on the
International Day of Rural Women

Connecting rural women
across the Glenelg Hopkins
and Corangamite catchments.

Join the International Day of Rural Women
gathering at Tae Rak for a morning
of learning and networking.

Wednesday 11 October

Join a 2-hour guided cultural walk
followed by lunch

Event details

Tour begins 11.30
Participants must
arrive by 11.15am

Cost \$30 (includes guided
tour and lunch at cafe)

RSVP to:
Mary Knight
m.knight@ghcma.vic.gov.au
0417 513 724




Glenelg
Hopkins CMA


ghcma


GHCMA


ghcma

Do you follow us on social media?

CMA NEWS:

Funding for wildlife in Portland region now available



Be the change
you wish
to see in the
world
MAHATMA GHANDI

APPLY NOW

Sea | South West Vic Landcare
• Southwest Environment Alliance •

WILDLIFE HABITAT FUND
RESTORE | CONNECT | PROTECT

The Southwest Environment Alliance (SEA) is inviting landholders in the Portland area to apply for funding to benefit local wildlife.

SEA is a coalition of local Landcare groups that works with the community to protect, restore and improve biodiversity values in the Portland region.

Grants of up to \$10,000 are available to assist landholders to protect native vegetation, waterways or wetlands, re-establish native remnant vegetation or remove weeds that threaten wildlife.

Applications will close 31 October 2023.

HOW TO APPLY: View the funding guidelines and apply online at www.sealliance.org.au