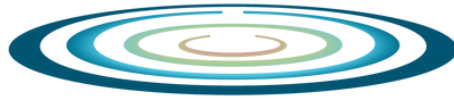


Glenelg Hopkins



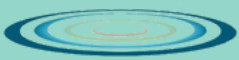
CMA



In this edition:

- Casterton show
- 2022-2023 Annual report
- Boat launch back open
- Hopkins river fish hotels
- Community Advisory Group
- Sanderlings are back for the summer
- On-farm Precision Ag trial has begun
- Carp comp
- Flora and fauna monitoring
- Flora and fauna monitoring
- Rivers of Warrnambool survey

Glenelg Hopkins



CMA

www.ghcma.vic.gov.au

Telephone: (03) 5571 2526

Email: ghcma@ghcma.vic.gov.au

It's all about water and our projects in the lead up to the end of year

There has been lots of action on the waterways this month, which is putting the rivers in good nick for the Christmas and holiday period.

This edition has lots of project updates on the restoration works happening across the region. This includes projects to install more fish habitat to increase native fish numbers and also boost recreational fishing, boat launch and fishing platform upgrades, environmental water releases, carp fishing competitions and other carp removal activities.

A highlight this month was finding a yellow eyed mullet 200 km up the Glenelg River, which is a long way from its usual estuarine home. This shows what is possible with the removal of fish barriers to encourage fish passage up our rivers.

Adam Bester CEO Glenelg Hopkins CMA

CMA NEWS:

Fun with waterbugs at Casterton Show

We travelled with our ever remarkable troop of Water Bugs to the Casterton show last month. The display at the show showcased the variety and number of water bugs in our region. Waterbugs are a great indicator of river health.

Each time we run this activity we get excited new faces asking wonderful new questions, and this time we even got to see critters we haven't seen up close before like the Taper-Tailed Tigers Larvae!



2022-2023 annual report released

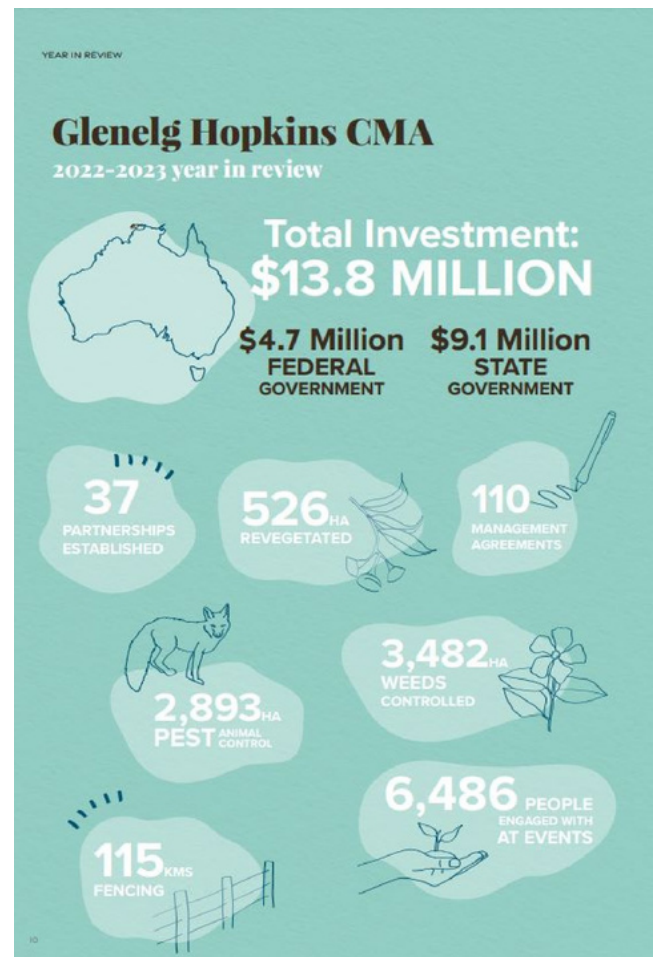
Gems of information can be seen in our annual report showing what we've been up to for the last year. Like how many hectares of weeds we've controlled (3482ha), people we have engaged with (6486), places we have delivered projects with our partners and how we have invest the money that's been invested in the CMA around our catchment (\$13.8m).

The annual report allows us to highlight some of the things we have done, seen, achieved and the people we have worked with.

They also serve to show us the challenges we have had (like last year's floods) and the continued goal of improving the land, water and biodiversity of our catchment working alongside and with Traditional Owners, communities, landholders and partners.

You can read ours from 2022-2023 on the website now or from the link below.

[READ HERE](#)



CMA NEWS:

Sandy Waterholes boat launch upgrade completed

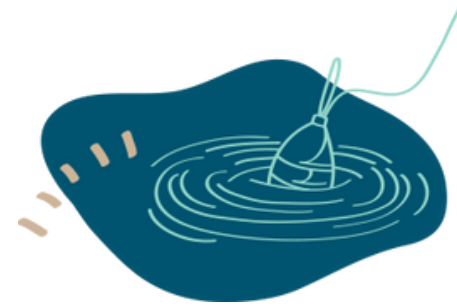
The Glenelg River's Sandy Waterholes boat launch area is back open to the public following the installation of its new floating pontoon boat launch.

The new floating structure will allow safe access to the waterway for recreational activities when the old timber structure is impacted by significantly high or low flows in the river.

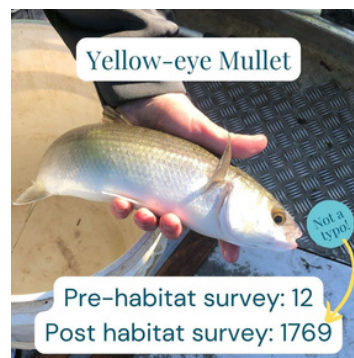
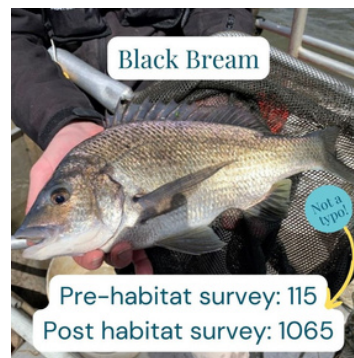


Fish booking into Hopkins River hotels

In the last year, we have installed 140 pieces of habitat into the Hopkins and Merri Rivers, and they are fulfilling their purpose. These are early survey numbers, but this is a massive win in terms of fish using the habitat we have installed for them to live in. Fish surveys are conducted prior to waterway works to give us baseline numbers, and we continue to re-survey to understand changes and trends.



Fish species	Pre habitat survey	Post habitat survey
Anchovy	0	2
Black Bream	115	1065
Bridled Goby	24	22
Eastern Australian Salmon	10	2
Estuary Perch	12	42
Flatheaded Gudgeon	0	402
Gobies	0	17
Smooth Toadfish	0	1
Southern Shortfin Eel	10	26
Tamar Goby	372	709
Tupong	9	2
Yellow-eye Mullet	12	1769
Sea Mullet	15	0
TOTAL	579	4059



CMA NEWS:

Community Advisory Group tour

Members of the Glenelg Hopkins Community Advisory Group met with CMA Staff at Point Danger, Portland, to gauge a greater understanding of the projects that are currently being undertaken.

Point Danger and the greater Portland area is the focus of our Southern Bent-wing Bat Nature Fund partnership project which is being undertaken in partnership with the State Government of Victoria, ARI, Southwest Environment Alliance, and Zoos Victoria.

Community Advisory Group members heard from project staff Marty Gent and Rob Gibson about how the project will support the critically endangered micro bats which call the Portland caves area home.



Sanderlings are back for the summer

Twenty state of the art Bluetooth GPS trackers were fitted to 20 Sanderling and successfully released. We are now on the hunt for both leg-flag readings of any Sanderling, with the lucky photographer receiving the monthly prize of a framed Jimmi Buscombe Sanderling print.

In addition, if you get close enough you can use the Ecotopia app on your smart-phone to connect to the birds fitted with bluetooth trackers to download their tracking data. You can find the details of how to use the app on our website. This data is essential for researchers to continue their work to better understand Sanderling movements along the Discovery Bay coast, but also throughout south-west Victoria and south-east South Australia.

Learn about
the app

[here](#)



CMA NEWS:

On-farm Precision Ag trial has begun

The CMA, Beyond Bolac Catchment Action Group and Precision Agriculture have collaborated and welcomed four experienced cropping farmers to a new trial. Each farmer has provided a 200ha cropping area with wetlands, as part of the trial which aims to demonstrate how Precision Ag (PA) strategies can contribute to the protection of natural assets like wetlands while also enhancing cropping yields.

Grid soil sampling will begin in the trial areas in mid-December which will provide each participant with a deeper understanding of their soils and the variation across the paddocks, enabling the Precision Ag team to create custom prescription files for each area avoiding waterlogged areas.

The Precision Ag team will track the performance of each crop within the trial area to evaluate whether they can achieve a high yielding crop without the need to cultivate the wetlands using the targeted Precision Ag approach.



Fishing comp reels in kilos of carp

The Casterton Angling Society Inc. carp fishing competition gathered 59 anglers ridding the Glenelg River of 405 carp

Dartmoor Angling Club came out in force with 30 members looking to claim the inaugural Ricky (Bear) Owens Shield. A staunch supporter of ridding the river of the invasive species, Ricky passed away last year when he held the position of club President.

The club members 'did it for Bear' claiming the shield after catching the most carp by an angling club with 174 of the 405 caught by Dartmoor Angling Club members.



Pictured: Brian Murrell with the biggest carp of the day (and leading contender for the heaviest carp of the year) with this 3.995kg (clean weight!!) 75.4cm ugly monster of a fish.

Flora and fauna monitoring

The second year of flora and fauna monitoring on the Penshurst-Dunkeld Rd grassland restoration sites has been completed. The wide roadsides of south-west Victoria are well recognised hotspots for threatened species and high-quality native grassland, owing to the long history of volunteer burning and lack of stock grazing. However, overtime introduced grasses have moved in and now dominate extensive areas.

Monitoring is undertaken by La Trobe University and GHCMA to examine the role that restored native grassland can play in reconnecting high-quality remnant grasslands that have become isolated through weed invasion. Along the road, nine patches previously dominated by introduced grasses are being restored to reconnect 5 km of native grassland. The hope is that this will allow plants to disperse and small animals to move along the roadside, reducing the likelihood of extinction if isolated to small areas. This includes threatened species such as the Striped Legless Lizard (*Delma impar*) and the Pale Everlasting (*Coronidium gunnianum*), both of which were recorded in the recent monitoring.

In addition, biomass samples were collected across the sites to examine how replacing introduced grasses with native grasses can lead to lower fire fuels. Restoration has now been completed at four sites, with earthworks and seed sowing for the remaining five to be completed early next year.



Got thoughts about the rivers around Warrnambool?



Share your river thoughts with us in a short online survey



Scan the QR code or visit the website below

www.surveymonkey.com/r/WarrnamboolRiverThoughts

Rivers of Warrnambool Community Survey

Glenelg Hopkins CMA invites you to complete an online survey (it takes about 5 mins) to understand how you use local rivers and your thoughts on their management. We are seeking your input to help shape the activities we deliver to manage our waterways.



Want to know more?

Email: rowsurvey@ghcma.vic.gov.au
or visit our website:
www.ghcma.vic.gov.au

This project is funded under the Victorian Government's Flagship Waterway Program