

In this edition:

- GEDB Ramsar management plan
- CAG visit Dunkeld
- New stewardship grassland areas planted
- Whole farm planning course available online
- New Growling Grass Frog project
- King's College on Budj Bim Culstural Landscape
- Dartmoor students Glenelg discovery day
- Glenelg River flows update
- H5N1 bird flu information
- Ag Vic farm course information

Glenelg Hopkins



CMA

www.ghcma.vic.gov.au

Telephone: (03) 5571 2526

Email: ghcma@ghcma.vic.gov.au

Seasonal conditions continue to challenge

Some recent good rains have been well received and have helped provide important runoff for some very dry dams and paddocks across the drought affected region.

The CMA is continuing to work with Agriculture Victoria and other agencies to help support farmers during the region's worst drought on record. This including our Sustainable Agriculture Facilitator coordinating and supporting workshops targeting landholders in areas of interest such as regenerative agriculture, farmer wellbeing and how best to capture water and rehydrate the landscape after rain.

Of course more can be done to help farmers and the community as the impacts of this drought will be felt for several years. The CMA will continue to work with both Victorian and Australian governments seeking opportunities for further support and investment.

Board meeting in Casterton

The May meeting of the Glenelg Hopkins CMA Board was held at Casterton and gave Board members the opportunity to get out to the Glenelg River and see some in-stream works and in-stream inhabitants. Seeing the juveniles of many species was a great sign of river health and our chair, Tony Ford, even got to hold a Tupong (right).



Adam Bester
CEO

Glenelg Hopkins CMA

Have your say on Ramsar site management for next 7 years

Are you a local around the Glenelg Estuary Discovery Bay area keen to understand what the new management plan for the Ramsar area includes?

Head along to this public information event on July 4 where we will be available to discuss the current and future plan of management for this ecologically significant area.

For the first time since its Ramsar listing in 2018 and the inaugural 7-year plan, the Glenelg Estuary Discovery Bay Ramsar Site management plan is being updated.

Public comment is now being sought from June 19 through to July 18, 2025.

Feedback and comments on the plan will still need to be lodged via the Engage Vic website which has been created specifically to gather community feedback.

The website can be accessed via the link below:

Renewal of the Glenelg Estuary Discovery Bay Ramsar Management Plan

The renewal of the management plan includes updated risk assessments, identification of priority threats, and updated management strategies.

Be part of the future management by learning about the plan before going online and providing your input and feedback to help shape the future of our precious Ramsar site.

PUBLIC INFORMATION EVENT

Friday, 4 July, 2025
3pm - 4.30pm
Nelson Fire Shed, Nelson, Vic

Submissions and comments on the draft Ramsar Management Plan are currently being received through Engage Victoria at the following website:

<https://engage.vic.gov.au/glenelg-estuary-and-discovery-bay-ramsar-management-plan>

To provide comment or feedback on the GEDB Management Plan go to the Engage Vic website [HERE](https://engage.vic.gov.au/glenelg-estuary-and-discovery-bay-ramsar-management-plan)

Community advisory group head to Dunkeld for meeting

This month the Glenelg Hopkins CMA Community Advisory Group met in Dunkeld for their regular meeting and annual field visit. The group provided feedback on the Regional Waterway Strategy review, before taking a visit to Dunkeld Pastoral Company's predator-proof fenced conservation area. Kai led the group on a very interesting walk through the enclosure, as well as an introduction to some of the small mammal species - including some very friendly Long Nosed Potoroos.

The Community Advisory Group is an advisory group which provides feedback to the CMA on projects and strategies. It is supported by the Glenelg Hopkins CMA and Victorian State Government under the Our Catchments Our Communities program.



New VVP grassland sites to create ongoing monitoring opportunities

The Victorian Volcanic Plains project team have been out on the grasslands to add threatened species seed to landholder grassland stewardship sites.

Each stewardship site contains a 400 m² monitoring plot established by ecologists in November last year.

Sites are located around the VVP including the Hamilton Bandicoot safe haven, and a mix of public and private land.

Approximately 66,000 seeds from 10 species were added to each monitoring plot along two 2m x 20m strips this week.

Native grasses were clipped back at 30 patches along each strip, exposing the soil. Seed was mixed with sand and spread across the exposed soil in the clipped back patches. Slug control has occurred in one strip, while the other strip was left untreated for slugs. The threatened species mix added to each grassland included one grass, one native pea, and 8 daisies including the Button Wrinklewort, Murnong, Hoary Sunray and Derrinallum Billy-button.

Over the coming years this experiment will examine how threatened plant populations can be established and managed in native grasslands on farms.

This project is a combination of projects on the grasslands of the Victorian Volcanic Plains the Glenelg Hopkins CMA is delivering.

The seed for this activity was produced through the Saving 17 Species Nature Fund project, funded by the Victorian Government, while the management and monitoring of the sites is supported through the Victorian Volcanic Plains Stewardship program, funded by the Australian Government Natural Heritage Trust.



REGISTER NOW: Free whole farm planning online course

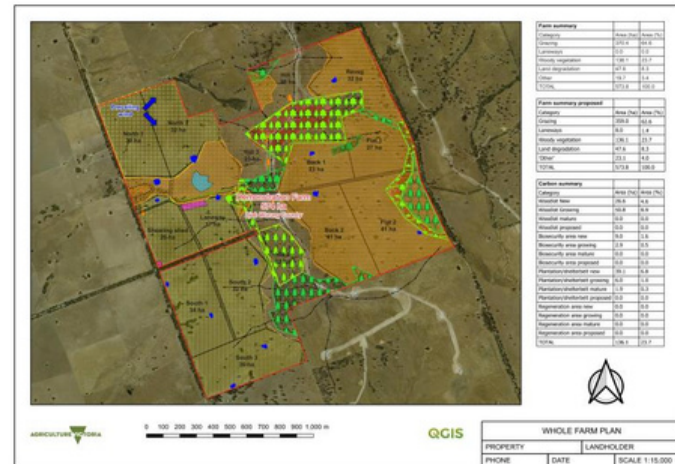
A FREE whole farm planning course for farmers in southwest Victoria is now available.

This six-week online course, 'Helping you meet the challenges of farming in the 21st century', is being delivered by Agriculture Victoria and covers:

- Farm design and layout
- Soils and land classing
- Pasture and grazing management
- Farm water supply
- Farm business planning
- Tree growing and biodiversity
- Adapting to a changing climate

Participants need to register by July 4.

More information is available at www.ghcma.vic.gov.au



This course is delivered by Agriculture Victoria, with support from the Glenelg Hopkins CMA and the Australian Government through funding from the Natural Heritage Trust under the Climate-Smart Agriculture Program.

Funding available to support farms being more frog friendly



If you have a wetland area on your farm that is or could be Growling Grass Frog habitat, the Glenelg Hopkins CMA has a new project to help you support it.

The new project: Improving the trajectory of the Growing Grass Frog in the Glenelg Hopkins region; can provide funded support to protect and encourage natural revegetation of what's already there by fencing it off, and undertaken some weed control works.

If you've got a wetland and keen to know what funding might be available, get in touch with the project officer Jacinta Hendriks ph (03) 5571 2526 or email j.hendriks@ghcma.vic.gov.au

Keep up to date with what we're up to at the CMA!



Glenelg Hopkins CMA



ghcma



Glenelg Hopkins CMA



Glenelg Hopkins CMA



ghcma



www.ghcma.vic.gov.au

Students learn about eels, music and seasons on Country

King's College Warrnambool grade 4/5 students peppered tour guide Reuben from Budj Bim Cultural Landscape Tourism with questions all day as they visited some of the most unique parts of the World Heritage listed cultural landscape.

Their very full day of learning started with a tour of Budj Bim and Lake Surprise, hearing about the creator story, going into one of the caves, experiencing traditional dance/singing in the cave, followed by a visit to Tae Rak to look at the eels in the eel tank and learn about the unique and amazing life cycle and journey of eels.

This was following by a stop at the Kurtonitj IPA to see and learn about fish and eel traps, and how traditional owners only take what they need and use the local resources sustainably. The students also learnt about the 6 traditional seasons of the Gunditjmara year at the seasonal calendar.

School visits like this are a community engagement activity to increase cultural awareness and learn about Gunditjmara and being on Country as part of the Budj Bim Flagship Waterways Project funded by the Victorian Government



Getting the low down on what's in the Glenelg at Dartmoor

The students at Dartmoor Primary School didn't have an ordinary day at school recently when the CMA team visited to talk to them about what's in the Glenelg River.

From a quick classroom session talking about the importance of the catchment and keeping the rivers clean, and a dress up in the Perc Perch costumes, the kids then wandered down to the river and got involved with all the fish the team from Austral had found in the river.

From learning about their very own special Glenelg Freshwater Mussels (the Dartmoor region is the only place in the world they are found!) to all the species of fish and invertebrates in the Glenelg River who benefit from the environmental flows, they were an enthusiastic and hands-on bunch!

Thanks to the CMA team of Noni, Tim, Steve, Galen and Howard, Dion and Tim from Austral Research and Consulting, and Daniel from OzFish for all the amazing information!



Low flows in the Glenelg and the Harrow Gauge is back online

Once again, the Glenelg Catchment has faced dry conditions leading into May 2025. Low rainfall and minimal natural inflows have impacted most of the catchment. Environmental water released from Rocklands continues to be the lifeline for the river, contributing to improved water quality, connectivity, and access to deeper drought refuge pools for our precious threatened species.

Flows at Balmoral (Weavers), Reach 1a

Streamflow in Balmoral sat just beneath the Summer/Autumn baseflow target for most of May. This is likely due to a disconnect between the winding back of releases and the lack of natural runoff. Persistent dry conditions have been the main contributing factor to the streamflow levels at Balmoral. Baseflows have now ceased from Rocklands but have helped to maintain water quality at Reach 1a. Hopefully natural flows will pick up the slack soon.

Flows at Harrow, Reach 1b

The Harrow gauge was under maintenance for much of the year, but fortunately this gauge has now been repaired. There is a clear relationship between the releases from Rocklands and streamflow at Harrow, showing how dependent the streamflow is on releases from Rocklands as a result of persistent dry conditions. This pattern is consistent throughout the month of May. Although baseflows have now ended, natural inflows will contribute to streamflow for coming Winter/Spring period.

Did you know?

Data obtained for this newsletter update is publicly accessible from Victoria's Water Measurement Information System (WMIS) website: <https://data.water.vic.gov.au/WMIS>

Flows at Dergholm, Reach 2

Streamflow levels at Dergholm have remained relatively consistent, and match releases from Rocklands, highlighting the dependency on regulated releases. However, by May we can see releases from Rocklands start to taper off and natural flows takeover, contributing to much needed streamflow for Dergholm. Baseflow targets were reached for the entire month of May, with a short peak during a mid-May due to some changes to releases at Rocklands. Consistent Environmental water baseflow releases in May have helped to maintain streamflow, connectivity and water quality during a very dry Summer/Autumn season.

Flows at Dartmoor, Reach 3

Drought conditions have continued to impact natural inflows, keeping the streamflow relatively low for this time of year. However, by mid-May we were seeing natural inflows pick up slightly to hit the Summer/Autumn baseflow target. These remained consistent until slowly decreasing toward the end of the month. Reach 3 isn't typically targeted with baseflow releases from Rocklands and flows are more likely attributed to the pattern of rainfall events. Note, the Water Management Information System that we record data from lacked input from mid-May to June.

To view a full report of this month's flows, including stream and flow graphs, please visit www.ghcma.vic.gov.au/what-we-do/water-for-the-environment/

CMA NEWS: Water for the Environment update

Where is the environmental water released from and what is their purpose?

To maintain biodiversity and water quality in the Glenelg River, environmental water is released at set times and volumes to mimic natural conditions and ecological objectives. These releases are designed to meet seasonal baseflow and fresh with the purpose of supporting the specific needs in our environment, particularly, for vulnerable and threatened species. Although these releases are primarily to benefit the environment, sometimes they can coincide with significant events of cultural and social significance.

Rocklands Wall: (pictured right)

Water released from Rocklands Wall primarily flows into the upper reaches of the Glenelg River between the Wall and Balmoral (Reach 1a).

5 Mile Outlet: (pictured below)

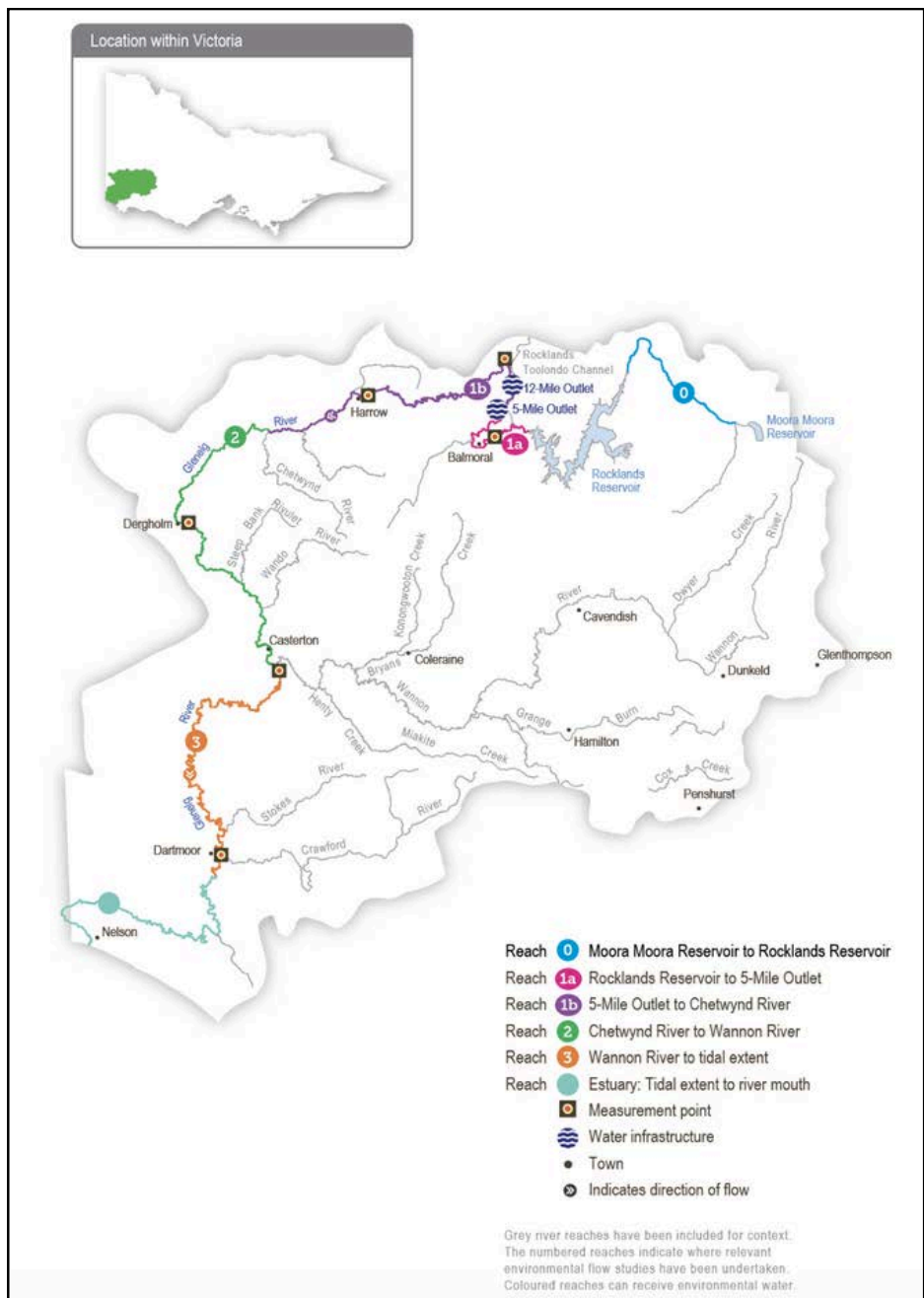
This is the main outlet used over summer as it can support the greatest length of river. It can do this by avoiding the choke point at Frasers Swamp and releasing downstream of Balmoral. The water released here can support the entire river through to Dergholm (Reach 2).



12 Mile Outlet:

Water from the 12 Mile Outlet is directed downstream towards the Reaches furthest from Rocklands, from Harrow (Reach 1b) to Dergholm (Reach 2) and beyond to Dartmoor (Reach 3). Its only really used during fresh releases (pulses of water) to maximise efficiency of the larger releases.

Releases from each outlet help to maintain target baseflows and freshes, which are critical for the health of the river, especially during periods of low rainfall and drought conditions.



H5N1 Bird Flu Information

AVOID RECORD REPORT

AVOID: If you find dead or sick birds. Do not touch birds or attempt to move them.

RECORD: Take photos of dead and sick birds, and the surroundings. If possible, record the GPS location.

REPORT: Emergency Animal Disease Hotline **1800 675 888** or via the **ONLINE FORM**

WHAT DO I REPORT?

REPORT CLUSTERS:

5 or more sick or dead wild birds of any species, anywhere in Victoria.

REPORT EVEN ONE:

- sick or dead penguin or pelican.
- sick or dead seagull or wader.
- sick or dead bird of prey (e.g. hawks, owls, eagles).
- sick or dead black swan, duck or goose.
- sick or dead marine mammal (e.g. seals, sea lions, dolphins).

HOW DO I REPORT?

**Emergency Animal
Disease Hotline
1800 675 888**

**Complete the
online reporting
FORM HERE**

**Visit
birdflu.gov.au
for more info**



