

## In this edition:

- Natural Capital Forum brings opportunities and knowledge to region on **October 8**
- The Green Sheep Project gets green light
- Lower Mt Emu flood study begins
- Join the grasslands walk in Hamilton on **October 16**
- Be part of this October's Great Southern BioBlitz
- Rotarians learn about Rivers of Warrnambool
- Glenelg Freshwater Mussel breeding success
- Landcare Leaders showcased in 10 year celebration
- Drought Crew on deck
- Grasslands flowering on VVP
- Drought employment information
- Bird Flu information
- Upcoming events

Glenelg Hopkins



CMA

[www.ghcma.vic.gov.au](http://www.ghcma.vic.gov.au)

Telephone: (03) 5571 2526

Email: [ghcma@ghcma.vic.gov.au](mailto:ghcma@ghcma.vic.gov.au)

## Spring signals action around the catchment with events aplenty on the calendar

The arrival of spring has signalled a flourish of activity in the catchment with many projects rolling out events.

The South West Natural Capital Forum this week is a great opportunity to hear from some of the leading minds in this space in our local area. We are thrilled to have such calibre of speakers at the inaugural event in Warrnambool on Wednesday,

Our grasslands have sprung to life with recent welcome rainfall and now is the perfect time to go and visit them yourself or join in one of the events planned by our Victorian Volcanic Plains team and their partner groups. The first of these is in Hamilton on October 16, and then check out the details of the other events on the VVP in the back pages of this newsletter.

It's been fantastic to get the first members of team employed through the Drought Employment program on the ground. It is pleasing to be able to support local people staying local while farms recover from drought conditions. Ironically, the first jobs they undertook were in the rain!

**Adam Bester**  
CEO

**Glenelg Hopkins CMA**



## Natural Capital forum - what is it and what's in it for the south west region?

Glenelg Hopkins CMA is pleased to announce that it will be hosting the South West Natural Capital Forum at the Warrnambool Golf Club on the 8th of October, with special thanks to the support of Rabobank and Warrnambool City Council.

The forum aims to bring together land management, farming, environment and finance sectors to explore the latest trends and emerging opportunities in natural capital and nature-based markets. The day will explore what natural capital means, how it benefits land management (including profitability, resilience and opportunities to diversify income), emerging finance and market opportunities, and why southwest Victoria is well placed to take up these opportunities.

The Forum will have a range of speakers lined up, including:

- MC – Marius Cuming – regional landholder, Woolmark sustainability consultant, podcaster.
- Welcome to Country – Peek Whurrong Elder Robert Lowe
- Keynote Speaker – Prof. Hugh Possingham – Fellow of the Royal Society, Accounting for Nature, University of QLD, Biodiversity Council of Australia
- Dr Adam Bester – CEO Glenelg Hopkins CMA
- Alex Maisey – Research Fellow La Trobe University
- Angela Hawdon – Solutions Development Manager Farming for the Future
- Dr Anthony O'Grady – CSIRO Forest Function team
- Alison Osborne – Rabobank Chief Sustainability Officer
- Sarah Whinney – Director Chatsworth House Pastora

**Tickets sales close TOMORROW - Tuesday Oct 7 - unless sold out prior.**

Know your farm's financial capital?  
What about it's Natural Capital?



*Tickets almost sold out  
Get in quickly!*

**SOUTH WEST NATURAL CAPITAL FORUM**  
WEDNESDAY 8 OCTOBER, 2025 | [www.ghcma.vic.gov.au/naturalcapitalforum](http://www.ghcma.vic.gov.au/naturalcapitalforum)  
WARRNAMBOOL GOLF CLUB

**Book your  
Natural Capital  
Forum tickets  
here**

**Supported by:**

**Rabobank**



**Australian Government**



## **Green light for The Green Sheep project**

Glenelg Hopkins CMA will be part of an almost \$3 million national project aiming to strengthen Australia's sheep industry in the face of a changing climate and market sustainability credentials.

The Green Sheep Project – led by Sheep Producers Australia – is a major national initiative to support the sheep industry with practical tools and knowledge to respond to a changing climate and meet growing global demand for verified sustainability credentials.

Over three years, the Green Sheep Project will partner with Natural Resource Management organisations and supply chain-bodies to equip producers with user-friendly tools for demonstrating their environmental credentials, support improved grazing and pasture management, document natural capital and make data-driven decisions.

**Find out more about the project [here](#)**



## **LOWER MOUNT EMU CREEK FLOOD STUDY**



**Community information session #1**

**Thursday, October 9, 2025**

**Terang Civic Hall (131 High Street, Terang)**

Drop-in session: 2–5pm Rotary Room

Information session: 6:30pm Rose Room

**For more information visit [www.ghcma.vic.gov.au](http://www.ghcma.vic.gov.au)**

This work is being funded by the Victorian Government's Flood Reclamation Roadmap (Fast Tracking Flood Studies in Regional Victoria)

## **Lower Mt Emu Creek focus of newest flood study**

Lower Mount Emu Creek will be the focus of the Glenelg Hopkins CMA's work through the Victorian Government's Flood Reclamation Roadmap (Fast Tracking Flood Studies in Regional Victoria) in 2025-2027.

The focus will be on the 1870 square km area of the Lower Mt Emu Creek, and covers the Mt Emu Creek floodplain across 4 council areas (Moyne, Ararat, Pyrenees and Corangamite).

This will be the biggest flood investigation we've ever done for the region in terms of the size of the area to be modelled.

to find out how to be involved, visit our website or attend the community information events.

**[Learn more about the Lower Mount  
Emu Creek flood study here](#)**



## Learn about grasslands at Hamilton Bandicoot enclosure walk

Get to know your grasslands with an informative stroll through the grasslands at the Hamilton Parklands Reserve and Bandicoot Safe Haven. The Glenelg Hopkins CMA senior biodiversity officers, Aggie Stevenson and Ben Zeeman will lead the walk around the reserve where existing grasslands thrive with the support of the resident Eastern Barred Bandicoots, and see the newly established woody grassland areas.

They will be joined by Plant Ecologist from the Arthur Rylah Institute, Brad Farmilo, who will talk about the monitoring of the grasslands being undertaken, while DEECA Natural Environment Programs Officer, Jonathon Lee, will talk about the recovery of the bandicoots in the safe haven and how their natural soil engineering skills support grassland regeneration.

To join the event, just meet at the Bandicoot gate beside the Pedrina Park ovals on North Boundary Road (behind the cricket and football clubrooms) at 10am on October 16 for a walking departure.



**Get to know your grasslands walk and talk *in Hamilton!***

**10am–12.30pm.  
Thursday 16 October**

Join the Glenelg Hopkins CMA VVP grasslands team of Aggie Stevenson and Ben Zeeman, ARI Plant Ecologist Brad Farmilo and DEECA Natural Environment Programs Officer, Jonathon Lee, for a grasslands monitoring walk/field day at the Hamilton Parklands reserve and Bandicoot safe haven for an engaging look at a native grasslands right here in Hamilton.

*How do I join in?*

Want to come along? Just meet at Bandicoot gate behind the the Pedrina Park ovals (behind the football/ cricket clubrooms), North Boundary Road, Hamilton, at 10am. Grassland walk to be followed by lunch at HIRL at 12.20pm.

Australian Government  
Glenelg Hopkins  
CMA  
Arthur Rylah Institute  
VICTORIA  
DEPARTMENT OF ENVIRONMENT, LAND AND WATER

## Join the Great Southern BioBlitz this October 24-27

The Great Southern BioBlitz is an opportunity for all Southern Hemisphere countries to record organisms during Spring and showcase our beautiful biodiversity to the world. The event is run by a grassroots network of keen citizen scientists from across the globe. The Great Southern BioBlitz for 2025 will run from October 24th-27th. Participants in the event will then have a further 14 days to upload and identify all of their observations made during this period to the iNaturalist platform. Anyone in the world is eligible to take part in the event. All you have to do is upload observations of wildlife to the [iNaturalist](https://www.inaturalist.org). Observations, however, must be made somewhere in the southern hemisphere during the event time frame.



Glenelg Hopkins  
CMA  
is joining the  
**GREAT SOUTHERN BIOBLITZ**

An online biodiversity blitz weekend across the entire Southern Hemisphere!

**OCTOBER 24-27 2025**



## Rotarian gathering hosts Rivers of Warrnambool talk

Recently our waterways team of Chris and Steve attended a gathering of five Rotary Clubs in Warrnambool to talk all things Rivers of Warrnambool Flagship project.

The clubs have already been involved in treeplanting along some of the rivers and are keenly interested in the ongoing projects in, on and around the waterways to support their health through one of the catchments' largest developing urban areas. Chris and Steve outlined the long term goals of the Flagship Waterways Project funded through the Victorian Government, and highlighted some of the work already completed since the project began in 2020 along the Hopkins and Merri Rivers, and Spring, Drysdale, Mt Emu, Deep and Brucknell creeks.



## Teeny tiny Daryl leading the way in Mussel research

Meet Daryl. This is the eldest of the viable threatened Glenelg Freshwater Mussel which have been spawned at the Victorian Fisheries Authority's Snob's Creek conservation hatchery.

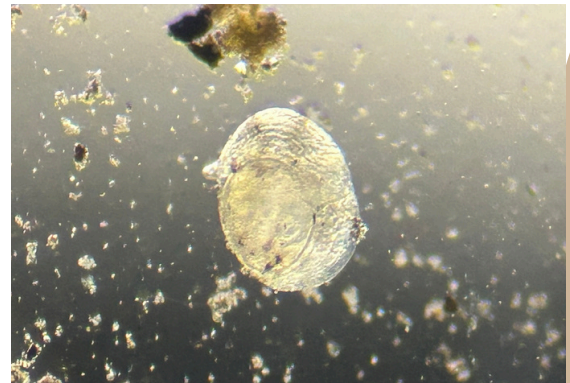
It's taken Sam and the team at the hatchery a little while to locate Daryl in the sand of the aquariums (3 weeks!) because Daryl is between 0.3 and 0.4mm in size

For reference, the image of Daryl circled is in black sand (below right) those giant balls of black around out little guy are grains of sand!

The researchers at the hatchery have also reported Daryl is not alone!

He is just the biggest ... but there are number of teeny tiny mussels that have full bellies and are growing when they have been discovered in the substrate!

If you want to know more about this project - Reversing the Decline of the Glenelg Freshwater Mussels, you can check out the project page at [www.ghcma.vic.gov.au](http://www.ghcma.vic.gov.au)





## LANDCARE NEWS:

# Landcare grant celebration booklet launched at National conference

When we put together a 10-year celebration of the Victorian Landcare Grants booklet we could think of no better place to launch it than the National Landcare conference - so we roped in Landcare Victoria to help!

The booklet is now available to read online at the CMA website at: [www.ghcma.vic.gov.au](http://www.ghcma.vic.gov.au)



*Pictured with our celebration booklet is (RIGHT) Landcare Victoria's CEO Claire Hetzel (left) and Communications and Engagement Coordinator, Sarah Vella; and FAR RIGHT: DEECA Victoria's Landcare team (from left) Yvonne Ryczkowski, John Robinson and Lou Miller.*

## New series of The Pondcast showcases Landcare Leaders in 10 year celebration

Meet the Landcare Leaders showcased in our 10 year celebration booklet In the new series of The Pondcast They are quietly going about improving not only their own farms and local area, but creating regionally significant impacts on the land, water and biodiversity and communities.

The podcast series is out now and you can find it via all the usual channels (Spotify, Apple Podcasts and Google Podcasts) or on our website at [www.ghcma.vic.gov.au](http://www.ghcma.vic.gov.au)

## Keep up to date with what we're up to at the CMA!



Glenelg Hopkins CMA



ghcma



Glenelg Hopkins CMA



Glenelg Hopkins CMA



ghcma



[www.ghcma.vic.gov.au](http://www.ghcma.vic.gov.au)

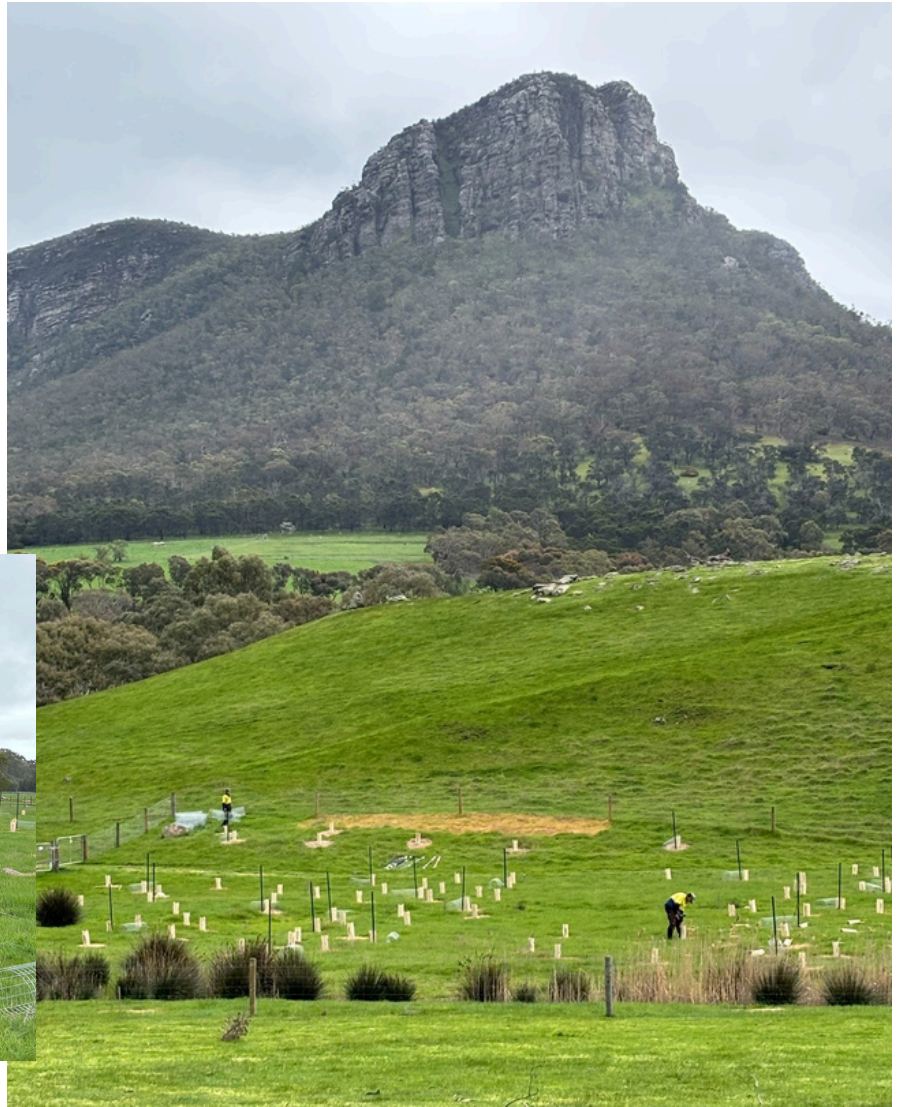


## **Drought employment crew roll out - in the rain!**

The first members of our Drought Employment Program began work this week ... and they've been tree planting in the rain with our CMA works crew of Galen and Howard!

But in terms of work locations, we think this isn't a bad one.

These photos also go a long way to showing just how quickly the landscape greens up with a little bit of rain ... but also that one rain doesn't break a drought.



---

## **Grasslands begin showing their colour as spring arrives**



The grasslands of the Victorian Volcanic plains have begun to show their spring colour. If you're out driving around our catchment, keep an eye on the roadsides which are some of the best examples of native grasslands.





# Employment opportunities to off-set the impact of drought in SW Victoria

The Glenelg Hopkins CMA, through the Victorian Government's Drought Employment Program, is offering casual employment opportunities through until June 2026 for people experiencing hardship because of dry conditions. These positions can work around seasonal farm commitments or existing reduced employment.

The CMA Drought Employment Program provides a way for farmers, farm workers and workers from farm-related industries impacted by hardship due to drought conditions in the Glenelg Hopkins and Corangamite CMA regions to earn an income, increase their skills and build confidence in future employment opportunities by undertaking a range of different catchment health works, like fencing, revegetation and pest and weed control.



**APPLICATIONS ARE NOW OPEN for roles within the Drought Employment Program**  
Interested participants will need to complete an EOI found at  
[www.ghcma.vic.gov.au](http://www.ghcma.vic.gov.au) or scan the QR code

For further information, contact Craig Reid  
on (03) 5571 2526 or email: [craig.reid@ghcma.vic.gov.au](mailto:craig.reid@ghcma.vic.gov.au)





# H5N1 Bird Flu Information

## AVOID RECORD REPORT

**AVOID:** If you find dead or sick birds. Do not touch birds or attempt to move them.

**RECORD:** Take photos of dead and sick birds, and the surroundings. If possible, record the GPS location.

**REPORT:** Emergency Animal Disease Hotline **1800 675 888** or via the **ONLINE FORM**

## WHAT DO I REPORT?

### REPORT CLUSTERS:

5 or more sick or dead wild birds of any species, anywhere in Victoria.

### REPORT EVEN ONE:

- sick or dead penguin or pelican.
- sick or dead seagull or wader.
- sick or dead bird of prey (e.g. hawks, owls, eagles).
- sick or dead black swan, duck or goose.
- sick or dead marine mammal (e.g. seals, sea lions, dolphins).

## HOW DO I REPORT?

**Emergency Animal  
Disease Hotline  
1800 675 888**

**Complete the  
online reporting  
FORM HERE**

**Visit  
[birdflu.gov.au](http://birdflu.gov.au)  
for more info**







# Get to know your grasslands walk and talk *in Hamilton!*

**10am–12.30pm.  
Thursday 16 October**

Join the Glenelg Hopkins CMA VVP grasslands team of Aggie Stevenson and Ben Zeeman, ARI Plant Ecologist Brad Farmilo and DEECA Natural Environment Programs Officer, Jonathon Lee, for a grasslands monitoring walk/field day at the Hamilton Parklands reserve and Bandicoot safe haven for an engaging look at a native grasslands right here in Hamilton.

## *What's it about?*

Learn about:

- What is a grassland
- Why do we need to monitor grasslands
- How do we monitor grasslands
- Why do we add seed into grasslands
- How is the Hamilton Safe Haven managed for bandicoot recovery
- Role of Eastern Barred Bandicoots in grassland management
- Role of CFA and burning in grassland management

## *How do I join in?*

Want to come along?  
Just meet at Bandicoot gate behind the the Pedrina Park ovals (behind the football/cricket clubrooms), North Boundary Road, Hamilton, at 10am. Grassland walk to be followed by lunch at HIRL at 12.20pm.



Australian Government



CMA







# Livestock and Landscape FARM TOUR

Join us on a bus tour to the Otways to visit a thriving carbon-neutral prime lamb operation with a strong focus on biodiversity

**WHEN** Monday 20 October  
**WHERE TO** Yan Yan Gurt West Farm, Otways  
**COST** FREE (includes meals and optional bus transport)  
**PICK UPS & DROP OFFS** Horsham, Stawell, Ararat, Skipton, Beeac

**REGISTER BEFORE 15 OCTOBER**

<https://forms.office.com/r/GmUGp1Reer>



**Wimmera CMA**

[wcma.vic.gov.au](http://wcma.vic.gov.au)

For further details and queries,  
please contact Bronwyn Bant

**Email** [bronwynbant@wcma.vic.gov.au](mailto:bronwynbant@wcma.vic.gov.au)

**Phone** 0427 529 232







# WOORNDOO CHATSWORTH LANDCARE GROUP'S COMMUNITY DAY 2025

## Living in a Volcanic Landscape

Learn about the geology, native plant communities & human occupation of a volcanic landscape



**Friday, 31 October 2025**



**Woorndoo Recreation Reserve-  
Lunch Provided**



**Saturday, 1 November 2025**

Tour of the district's geology & grassland walk  
BYO Food, drinks. Bus available (limited seats) or self drive

**REGISTER NOW**

[www.trybooking.com/DFWRV](http://www.trybooking.com/DFWRV)



**Registrations close Tuesday 28 Oct 2025**

For further information, please contact Susan Bosch, President, WCLG on 0419 364 149 or email [susanleebosch@outlook.com](mailto:susanleebosch@outlook.com)

## PROGRAM

### Friday 31 Oct

**8:30am Registrations & walk @ Woorndoo Common** with botanist Dean Karopoulos (ARI) **Morning Tea**

**10am Welcome**  
President Susan Bosch, WCLG

**10:15am Ancient & recent geology of south-western Victoria**  
Dr James Driscoll (Geologist, Monash University)

**11.15am Eel traps and stone structures**  
Eastern Maar (TBC)

**12pm Lunch**

**1pm Geology and archaeology - Pt. Ritchie (Moyjil)**  
Hon. Assoc. Prof. John Sherwood

**1:45pm Dry stone walls of south-western Victoria**  
Dr Timothy Hubbard (President DSWAA)

**2:30pm Plant communities in relation to geology** Dr Ben Zeeman (GHCMa)

**4pm Native Grassland walk**  
Dean Karopoulos (Botanist)

**7pm Dinner @ Lake Bolac Hotel**

### Saturday 1 Nov

**8:30am-3:30pm**

**Field trip** Geological tour & grassland walks. Meet at Woorndoo Common  
BYO Food, drinks & bus available (limited seats) or self drive

