

Glenelg Hopkins CMA Community Advisory Group

Information Pack 2025

Glenelg Hopkins CMA Overview

Glenelg Hopkins CMA was established to provide integrated management of land and water resources within the region. The CMA bridges the gap between the government and community on natural resource management. Our region covers 2.6 million hectares and extends from close to Ballarat in the central highlands of Victoria, west to the South Australian border and south to the coast, including the major urban centres of Ballarat (in part), Ararat, Hamilton, Portland and Warrnambool.

Glenelg Hopkins CMA has statutory functions under the *Water Act 1989* regarding waterways, floodplain management and regional drainage. The CMA also has functions under the *Catchment and Land Protection Act 1994*, which entail the provision of advice to the State Government on regional priorities for catchment management and development of the *Regional Catchment Strategy*.

Glenelg Hopkins CMA is governed by a Board comprising seven community members, which is responsible for developing the CMA's strategic direction.

The CMA is responsible for the development and implementation of strategies and plans to protect and enhance the health of the region's land, water and biodiversity.

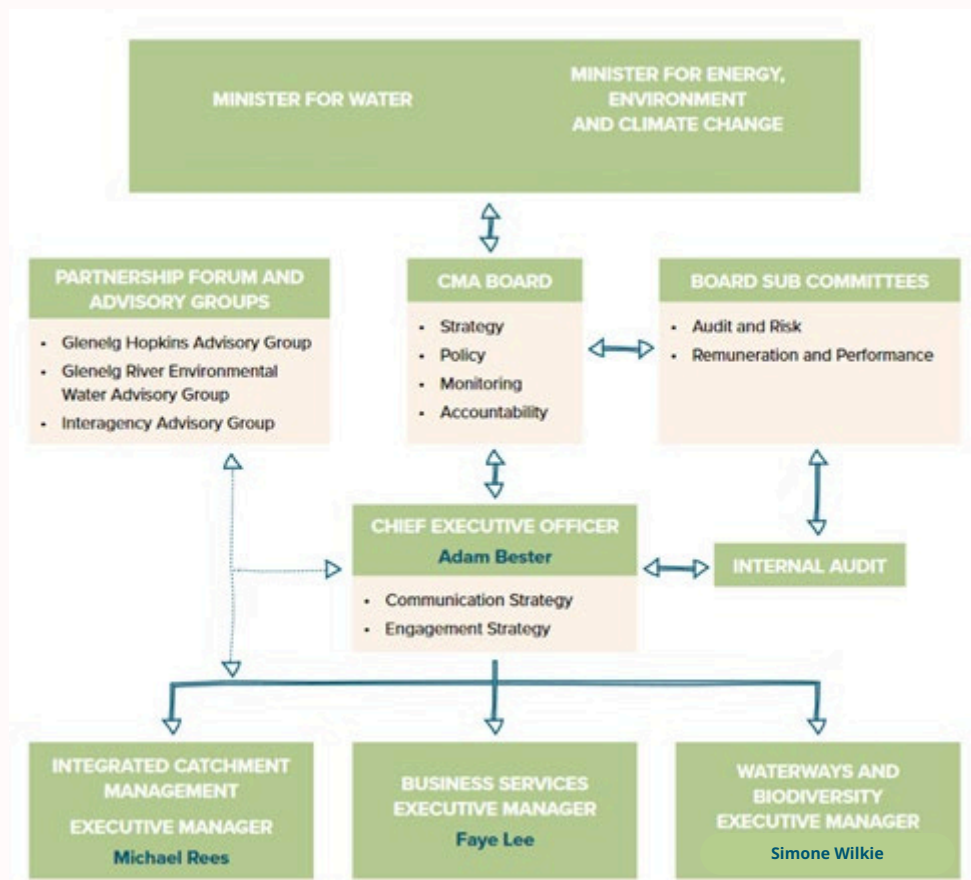


Diagram: CMA organisation and reporting structure

Glenelg Hopkins Community Advisory Group overview

The Glenelg Hopkins Community Advisory Group comprises between five to twelve community members. Its purpose, role, membership and operating practices are specified in the Glenelg Hopkins Community Advisory Group *Terms of Reference*. The appointment term for this recruitment period is for three years, until the 30 October 2028. A detailed induction program will be provided for all members.

The Glenelg Hopkins Community Advisory Group will meet at least three times per year. Remuneration will be provided for community members in accordance with the CMA's *Payment to Members of Advisory Groups Policy*. The policy is based on the Victorian Government's *Appointment and Remuneration Guidelines for Victorian Government Boards Statutory Bodies and Advisory Committees (2019)* and the rate is directed by the Minister for Water.

The Glenelg Hopkins Community Advisory Group provides one of the ways in which the community can provide a voice to the CMA, through providing advice, raising and discussing catchment issues, providing input into CMA projects/programs, and providing feedback on regional strategies.

Copies of the CMAs strategies and other publications can be viewed by visiting the Glenelg Hopkins CMA website at www.ghcma.vic.gov.au.

Advisory Group member selection process

Selection criteria have been developed to evaluate all applications in a fair and transparent way.

The selection criteria are as follows:

- Knowledge of the Glenelg Hopkins catchment, its issues and a commitment to improving catchment health.
- Experience in one or more of the following categories: rivers, wetlands, coasts, biodiversity, indigenous land management, community engagement and/or sustainable agriculture.
- Sound communication skills with the ability to work constructively within a team.
- Experience as a community leader, with links to community groups.
- Strategic planning experience and/or understanding of regional planning processes in an NRM context.

Once individual nominations have been assessed, the selection panel may also consider whether the membership reflects the diversity of interest and/or geographic location, in determining final composition of the Advisory Group.

Short listed applicants may be interviewed by a small panel.

Further queries

Please contact Jenny Emeny at Glenelg Hopkins CMA on 0436 933 728 812 or j.emeny@ghcma.vic.gov.au for further information, or visit the CMA's website at www.ghcma.vic.gov.au to obtain an information pack and application form.