

Glenelg Hopkins CMA Glenelg River Environmental Water Advisory Group

Information Pack 2025

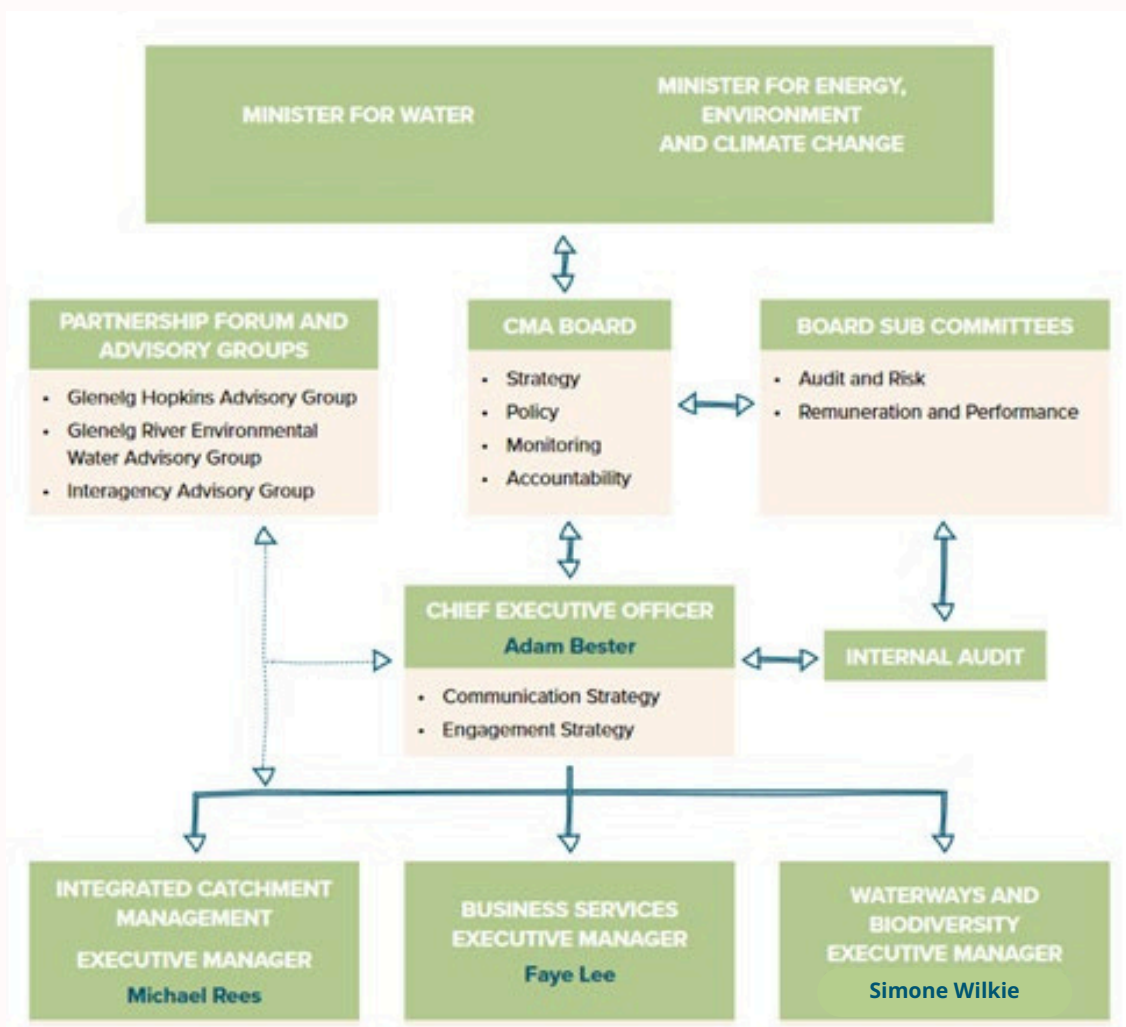
Glenelg Hopkins CMA Overview

Glenelg Hopkins CMA was established to provide integrated management of land and water resources within the region. The CMA bridges the gap between the government and community on natural resource management. Our region covers 2.6 million hectares and extends from close to Ballarat in the central highlands of Victoria, west to the South Australian border and south to the coast, including the major urban centres of Ballarat (in part), Ararat, Hamilton, Portland and Warrnambool.

Glenelg Hopkins CMA has statutory functions under the *Water Act 1989* regarding waterways, floodplain management and regional drainage. The CMA also has functions under the *Catchment and Land Protection Act 1994*, which entail the provision of advice to the State Government on regional priorities for catchment management and development of the Regional Catchment Strategy.

Glenelg Hopkins CMA is governed by a Board comprising seven community members, which is responsible for developing the CMA's strategic direction.

The CMA is responsible for the development and implementation of strategies and plans to protect and enhance the health of the region's land, water and biodiversity.



CMA organisation and reporting structure

Glenelg River Environmental Water Advisory (GREWAG) Group overview

The Glenelg River Environmental Water Advisory Group (GREWAG) comprises community members and partner organisations with an interest in environmental watering in the Glenelg River.

The Advisory Group is made up of a maximum of 15 members comprising of:

- 3 local landholders;
- 3 community representatives;
- A representative from Gunditj Mirring Traditional Owner Corporation and Barengi Gadjin Land Council; Burrandies Aboriginal Corporation
- An agency representative from GWMWater, the Victorian Environmental Water Holder (VEWH), Parks Victoria (PV), Fisheries Victoria, and Victorian Fisheries Authority (VFA).

The purpose, role, membership and operating practices are specified in the Glenelg River Environmental Water Advisory Group Terms of Reference. The appointment term for this recruitment period is for three years, and will meet at least twice annually. A detailed induction program will be provided for all members. Remuneration will be provided for community members in accordance with the CMA's Payment to Members of Advisory Groups Policy.

The policy is based on the Victorian Government's Appointment and Remuneration Guidelines for Victorian Government Boards Statutory Bodies and Advisory Committees (2019) and the rate is directed by the Minister for Water.

The Glenelg River Environmental Water Advisory Group is one of the vehicles by which the CMA will engage the community and agencies in the development, monitoring, reporting and adaptive management of environmental watering of the Glenelg River and the development of the Seasonal Watering Proposal.

Copies of the CMA's Seasonal Watering Proposal and other publications can be viewed by visiting the Glenelg Hopkins CMA web site at www.ghcma.vic.gov.au. The statewide Seasonal Watering Plan can be found on the VEWH's website: [VEWH - Seasonal watering plan](#).

Advisory Group member selection process

Selection criteria have been developed to evaluate all applications in a fair and transparent way. The selection criteria are as follows:

- Knowledge of the Glenelg River catchment issues and values, and a commitment to improving catchment health.
- Experience in one or more of the following categories: rivers, wetlands, coasts, biodiversity, Indigenous land management and/or sustainable agriculture.
- Sound communication skills with the ability to work constructively within a team.
- Experience as a community leader, with links to community groups.
- Strategic planning experience and/or understanding of environmental water planning processes in an NRM context.

Once individual nominations have been assessed, the selection panel may also consider whether the membership reflects the diversity of interest and/or geographic location, in determining final composition of the Advisory Group.

Short-listed applicants may be interviewed by a small panel.

Further queries

Please contact Alex Lewis at Glenelg Hopkins CMA on 0422 806 366 or a.lewis@ghcma.vic.gov.au for further information, or visit the CMA's website at www.ghcma.vic.gov.au to complete the application form.