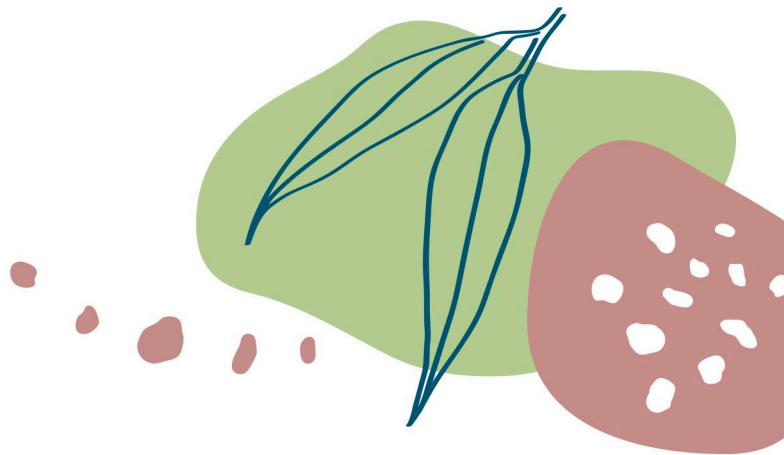




Media Release



1 December 2025

APPLICATIONS FOR CMA ADVISORY GROUPS OPEN

Applications for roles on the Glenelg Hopkins CMA Advisory Groups are now open to community members.

The Glenelg Hopkins has two advisory groups which require community members to be part of – the CMA Community Advisory Group and the Glenelg River Environmental Water Advisory Group.

“Our advisory groups form a key part of our community engagement and they are the eyes and ears on the ground, keeping the CMA up to speed on the issues and opportunities in the region,” Glenelg Hopkins CMA CEO Adam Bester said.

“The community advisory group provides feedback across the organisation’s programs, while the environmental water group specifically provides feedback on how the environmental water program is delivered for the Glenelg River.

“Every three years we call for members of these groups, and existing members can re-nominate, but we always look to make sure there are a broad ranges of voices across age, gender and experience from within our communities to provide feedback to the CMA,” he said.

The Community Advisory Group has up to 13 members, while the Environmental Water Advisory Group has 6 community members (3 landholders and 3 community members). The groups meet up to three times a year and positions are renumerated. Further information can be found in the information packs online at www.ghcma.vic.gov.au

Applications for the groups are being accepted between November 28 and December 17 with the outcome of the process expected to be completed by end of January 2026.

The Glenelg Hopkins CMA's advisory groups are funded by the Victorian Government through the Environmental Contribution and Our Catchments Our Communities program.

ENDS