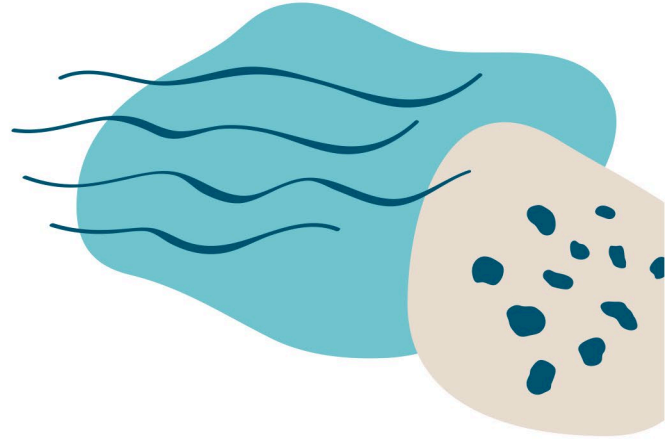


Media Release



1 December, 2025

SUMMER FLOWS TO SUPPORT GLENELG RIVER

Passing flow, compensation flow and environmental water will begin flowing in the Glenelg River from December 2. River users likely to notice changes to water levels as the fresh (pulse of water) makes its way downstream.

The passing flows are a small proportion of all the water that flows into Rocklands Reservoir which is required to be released downstream of Rocklands. These are often released alongside environmental water or compensation flow to support river values.

Compensation flows are delivered to support landholders with domestic and stock water rights along the river and allows them to access water to supplement on-farm storages.

“The passing flows support the river in ensuring it remains connected and salinity levels are low,” Glenelg Hopkins CMA Executive Manager Waterways, Simone Wilkie, said.

“Being able to deliver compensation flows as part of these flows supports landholders along the waterway with access to stock and domestic supplies which are still low despite some recent rainfall.

“Last year we saw salinity levels in the river really spike due to dry conditions and lack of inflows, so by delivering these flows together, the outcomes are better for the river environment, its inhabitants, landholders and the communities along the river system because the river is in a healthier state,” Ms Wilkie said.

The fresh will be delivered across a period of around 16 days and then will reduce to baseflows for an extended period over summer.

River levels can be viewed online in real-time by viewing the Glenelg flows map at <https://www.ghcma.vic.gov.au/what-we-do/water-for-the-environment/>

The Glenelg River’s environmental flows are guided by the Victorian Environmental Water Holder’s Seasonal Watering Plan which is released at the end of June annually.

The plan can be viewed online at <https://www.ghcma.vic.gov.au/what-we-do/water-for-the-environment/>

ENDS

CAPTIONS: ***Water for the environment and compensation flows for landholders will begin to be delivered to the river from the Rocklands Reservoir on December 2. IMAGES: Glenelg Hopkins CMA***

