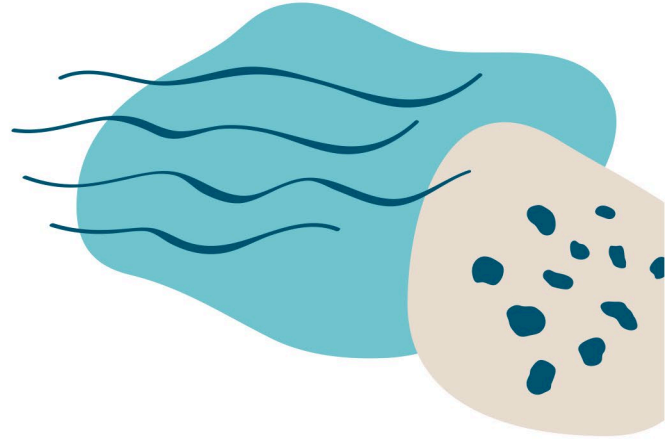


# Media Release



4 December 2025

## WIDE BENEFITS FROM GLENELG RIVER ENVIRONMENTAL FLOWS

Difficult seasonal conditions in the Glenelg Hopkins catchment area in the last 12 months made decisions around environmental water flows in the Glenelg River challenging. However, the Glenelg Hopkins CMA's decision to deliver these flows has had benefits to more than just the river, it has also supported farmers and communities.

In a review of the 2024-2025 seasonal water delivery in the Glenelg River, Glenelg Hopkins Executive Manager Waterways, Simone Wilkie, said the CMA was challenged due to the persistent and intensifying dry conditions in the region.

"Winter and spring 2024 saw drought across much of western Victoria, and the situation remained dry through summer which made decisions around the seasonal watering program very challenging because we could see the need for water across many fronts along the Glenelg River," Ms Wilkie said.

In response to the dry start to the season, by November 2024, a decision was made for early releases of environmental water and compensation flows, which would also allow landholders access to stock and domestic water supplies.

"These flows countered declining streamflow and rising salinity levels and were critical in sustaining connectivity and improving water quality throughout the system", Ms Wilkie said.

For landholders along the river, having access to fresh water supplies from the river to support on-farm storages was a significant benefit.

"We got a fright last year when salt levels rose so dramatically (in the river)," Balmoral landholder, Justin Weaver said.

"Going into Summer this year, in the northern end of the catchment we're more concerned about quality rather than quantity because we have on farm storages that are better than last year."

Mr Weaver said without environmental flows and compensation flows, the region would have seen significant production losses on farms and quite possibly animal deaths, both domestic and native.

"Overall, the watering actions in 2024-2025 were essential in managing the effects of prolonged drought conditions," Ms Wilkie said.

"The flows helped to maintain ecological function, reduce salinity, maintain river connectivity and support the landscape for both domestic and native species, improving water quality across the

Glenelg River system and it is really that whole system and user benefit we aim for with environmental flows," she said.

These flows complement on-ground activities such as delivering stock fencing, off-stream watering, weed control and revegetation incentives to restore high quality riparian vegetation corridors that are resistant to flood related channel change such as riverbed and bank erosion.

The Glenelg River's environmental flows are guided by the Victorian Environmental Water Holder's Seasonal Watering Plan which is released at the end of June annually.

The plan can be viewed online at <https://www.ghcma.vic.gov.au/what-we-do/water-for-the-environment/> together with a real-time map of the Glenelg River flows and levels at each of the gauge points on the river.

**ENDS**



CAPTION: Environmental flows in the Glenelg river support environmental and community benefits.