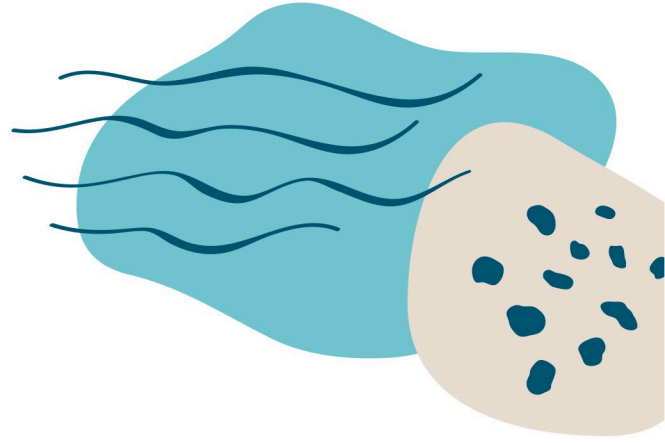


Media Release



7 April 2026

Community invited to shape the future of local waterways

How do you use and value our waterways in south-west Victoria?

Glenelg Hopkins CMA is calling on community members to share their thoughts, ideas and hopes for the region's rivers, wetlands and estuaries as work begins on a new Glenelg Hopkins Regional Waterway Strategy.

The strategy will guide how waterways are cared for over the next decade, and community voices are essential in getting it right.

"It's important that this strategy reflects community aspirations and what's achievable," Glenelg Hopkins CMA Executive Manager Waterways, Simone Wilkie, said.

"In ten years, we want to look back and see that we've delivered most of what we set out to do. That will mean in some cases we need to be selective and smart about what we include in the strategy."

The strategy would build on past work and projects already happening in the region, leverage on the efforts of partner organisations including Traditional Owners, community groups, and landholders, and be considerate of the changing nature of the region.

"It requires careful thinking about what's appropriate in a changing climate and ensuring good value for money, balanced with the community's value of waterways. It is important to get it right for the success of the strategy," she said.

Ms Wilkie said waterway values can mean many different things to many different people.

It might be the native plants and animals that rely on healthy rivers and wetlands, or it could be a favourite fishing spot, a peaceful place to walk the dog, or somewhere that simply helps them feel calm and connected to nature, she said.

Traditional Owners have cared for the waterways in the region for thousands of years and continue to practice culture and share knowledge to care for living waterways.

Waterways also support farming, tourism and local businesses, and they play a vital role in the environment by supporting biodiversity and helping to keep landscapes healthy.

"The waterway strategy aims to balance all of these uses and values of waterways, Ms Wilkie said.

"Because everyone uses and appreciates waterways differently, it's important to hear from as many people as possible during this development phase of the strategy," she said.

Community members can share their views online, where they can refine a vision, drop a pin on a map for a favourite spot, or simply tell a story about a place they care about.

Have your say at www.engage.ghcma.vic.gov.au.

ENDS

*IMAGES: Waterways of the Glenelg Hopkins CMA region included as part of the Regional Waterway Strategy planning.
Image credit: Glenelg Hopkins CMA*

